

**PATTERN** Diversion  
**COLOR** Wild Berry

**BRAND**

**Fabricut**

**APPLICATION**

**Fabric**

**USES**

**Upholstery**

**CATEGORIES**

**Wovens, Chenille**

**COLORS**

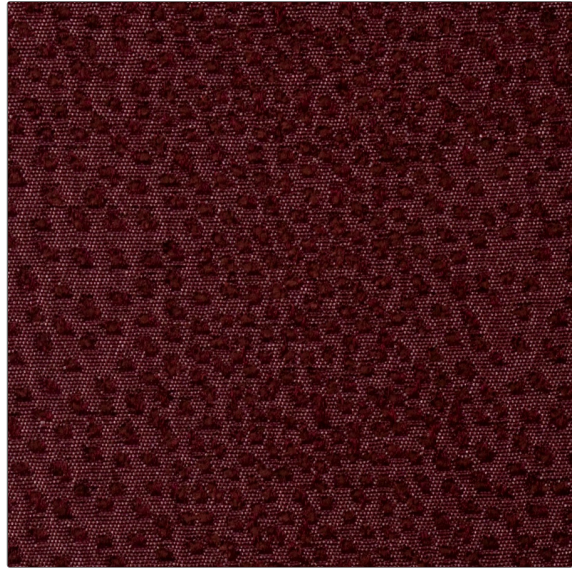
**Lavender / Purple,  
Burgundy**

**DESIGN TYPES**

**Texture Plain,  
Contemporary / Modern**

**RAILROADED**

**Not Railroaded**



**WIDTH**

**54.00 in (137.16 cm)**

**FINISH**

**Teflon<sup>®</sup> Finish**

**VERTICAL REPEAT**

**0.00 in (0.00 cm)**

**HORIZONTAL REPEAT**

**0.00 in (0.00 cm)**

**CONTENT**

**53% Polyester 41% Rayon  
6% Cotton**

**BACKING**

**FIRE CODES**

**UFAC Class I**

**DOUBLE RUBS**

**Exceeds 45,000 Double  
Rubs (Wyzenbeek Method)**

**PRODUCT NUMBER**

**2444504**

**COUNTRY**

**USA**

**CLEANING CODES**

**S**

**ADDITIONAL PRODUCT NOTES**

**Teflon<sup>®</sup> Finish, Exclusive Pattern**