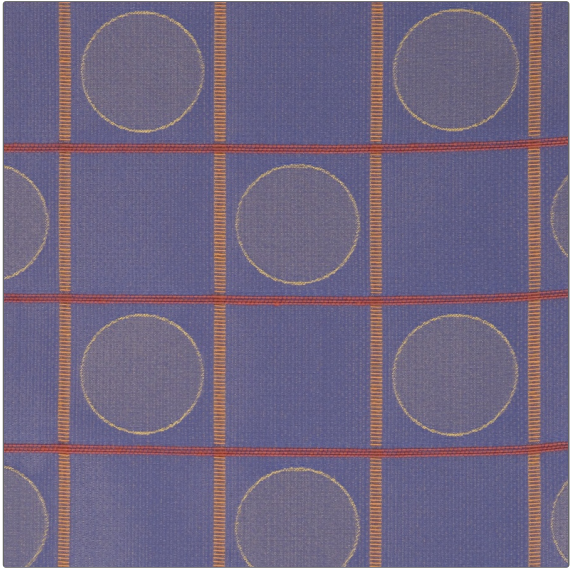


**PATTERN** **Connect Four**  
**COLOR** **Cadet**

<b>BRAND</b>	<b>APPLICATION</b>
<b>Fabricut</b>	<b>Fabric</b>
<b>USES</b>	<b>CATEGORIES</b>
<b>Bedding, Drapery, Multipurpose</b>	<b>Wovens</b>
<b>COLORS</b>	<b>DESIGN TYPES</b>
<b>Blue</b>	<b>Geometric, Contemporary / Modern, Dots / Circles</b>
<b>SCALE</b>	<b>RAILROADED</b>
<b>Medium</b>	<b>Not Railroaded</b>



<b>WIDTH</b>	<b>VERTICAL REPEAT</b>	<b>HORIZONTAL REPEAT</b>	<b>CONTENT</b>
<b>54.00 in (137.16 cm)</b>	<b>4.50 in (11.43 cm)</b>	<b>4.70 in (11.94 cm)</b>	<b>63% Polyester 37% Cotton</b>
<b>BACKING</b>	<b>FIRE CODES</b>	<b>DOUBLE RUBS</b>	<b>PRODUCT NUMBER</b>
	<b>UFAC Class I, Passes NFPA 260</b>	<b>Exceeds 6,000 Double Rubs (Wyzenbeek Method)</b>	<b>2501310</b>
<b>COUNTRY</b>	<b>CLEANING CODES</b>		
<b>Belgium</b>	<b>S</b>		

**ADDITIONAL PRODUCT NOTES**

**Exclusive Pattern**