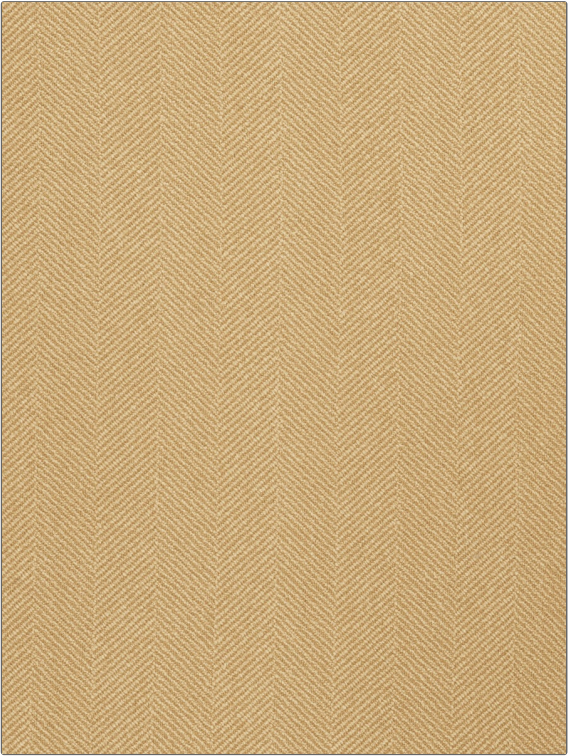


| | |
|---------|-------|
| PATTERN | Bijou |
| COLOR | Mocha |

| | |
|------------|---------------------------------------|
| BRAND | APPLICATION |
| Fabricut | Fabric |
| USES | CATEGORIES |
| Upholstery | Wovens, Solids / Small Scale Patterns |
| COLORS | DESIGN TYPES |
| Gold | Herringbone, Solid, Texture Plain |
| RAILOADED | |
| Railroaded | |



| | | | |
|------------------------------------|-------------------------------|-------------------------|---|
| WIDTH | FINISH | VERTICAL REPEAT | HORIZONTAL REPEAT |
| 54.00 in (137.16 cm) | Soil & Stain Repellent Finish | 0.00 in (0.00 cm) | 2.50 in (6.35 cm) |
| CONTENT | BACKING | FIRE CODES | DOUBLE RUBS |
| 84% Rayon, 15% Polyester, 1% Nylon | 100% Acrylic Backing | UFAC Class I / NFPA 260 | Exceeds 50,000 Double Rubs (Wyzenbeek Method) |
| PRODUCT NUMBER | COUNTRY | CLEANING CODES | |
| 2513813 | USA | S | |

| |
|---|
| ADDITIONAL PRODUCT NOTES |
| Soil & Stain Repellent Finish, Ca Tb 117-2013, 100% Acrylic Backing, Shown Railroaded |