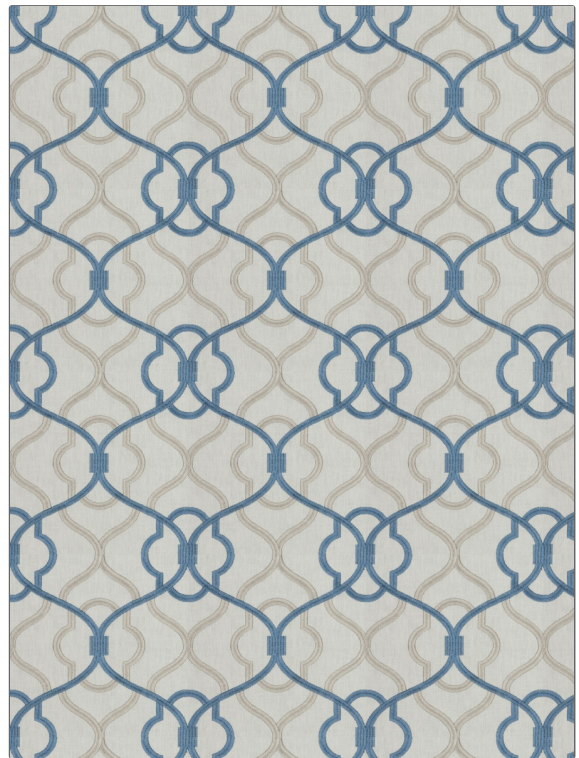


| | |
|-------------------------------------|------------------------|
| PATTERN | Passarella |
| COLOR | Delft |
| BRAND | APPLICATION |
| Fabricut | Fabric |
| USES | CATEGORIES |
| Bedding, Drapery | Crewels / Embroideries |
| BOOK | COLORS |
| Surroundings (4 Books) Waterfall | Blue |
| DESIGN TYPES | SCALE |
| Embroidery, Lattice / Fretwork | Medium |
| RAILOADED | |
| Not Railroaded | |



| | | | |
|----------------------|--------------------|--------------------|--|
| WIDTH | VERTICAL REPEAT | HORIZONTAL REPEAT | CONTENT |
| 51.00 in (129.54 cm) | 9.00 in (22.86 cm) | 8.50 in (21.59 cm) | 60% Polyester, 30% Cotton, 10% Linen, Embroidery: 100% Viscose |
| BACKING | PRODUCT NUMBER | DATE BOOKED | COUNTRY |
| | 2674010 | 09/2021 | India |
| CLEANING CODES | | | |
| S | | | |

ADDITIONAL PRODUCT NOTES

Ca Tb 117-2013, Exclusive Pattern, Embroidered Textiles Are Not, Guaranteed For Precise Color, Matching And Colorfastness., Color Placement Of Embroidery, May Vary. All Measurements, Quoted For Repeats Are, Approximate.