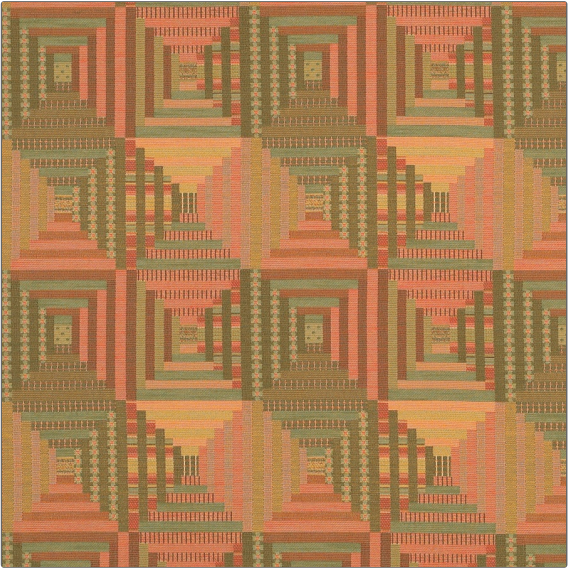


| | |
|---------|-----------------|
| PATTERN | Log Cabin Quilt |
| COLOR | 04 |

| | |
|---------------|--------------------|
| BRAND | APPLICATION |
| Fabricut | Fabric |
| USES | CATEGORIES |
| Upholstery | Wovens |
| COLORS | DESIGN TYPES |
| Coral / Peach | Geometric, Diamond |
| SCALE | RAILROADED |
| Large | Not Railroaded |



| | | | |
|----------------------|---------------------|--|---------------------------------------|
| WIDTH | VERTICAL REPEAT | HORIZONTAL REPEAT | CONTENT |
| 54.00 in (137.16 cm) | 14.00 in (35.56 cm) | 14.00 in (35.56 cm) | 46% Cotton 32% Polyester 22% Rayon |
| BACKING | FIRE CODES | DOUBLE RUBS | PRODUCT NUMBER |
| | UFAC Class I | Exceeds 25,000 Double Rubs (Wyzenbeek Method) | 2839004 |
| COUNTRY | CLEANING CODES | | |
| USA | S | | |

| |
|--------------------------|
| ADDITIONAL PRODUCT NOTES |
| Exclusive Pattern |