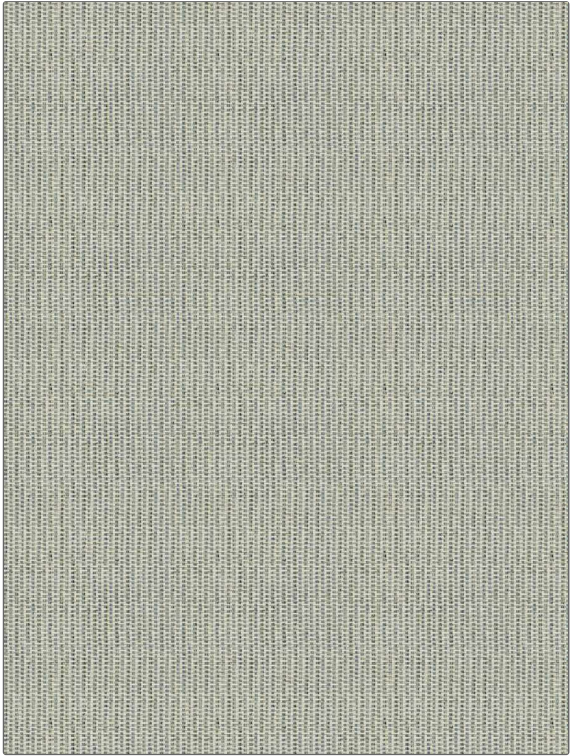


PATTERN Kowhai
COLOR 04



| | |
|--------------------------------|---------------------|
| BRAND | APPLICATION |
| Fabricut | Fabric |
| USES | CATEGORIES |
| Bedding, Drapery, Multipurpose | Wovens |
| COLORS | DESIGN TYPES |
| Blue | Texture Plain |
| SCALE | RAILROADED |
| Small | Not Railroaded |

| | | | |
|----------------------|-------------------------|--|--|
| WIDTH | VERTICAL REPEAT | HORIZONTAL REPEAT | CONTENT |
| 55.00 in (139.70 cm) | 0.00 in (0.00 cm) | 0.00 in (0.00 cm) | 70% Polyester, 11% Cotton, 7% Polyester Chenille, 6% Rayon, 6% Linen |
| BACKING | FIRE CODES | DOUBLE RUBS | PRODUCT NUMBER |
| | UFAC Class I / NFPA 260 | Exceeds 100,000 Double Rubs (Wyzenbeek Method) | 3014104 |
| COUNTRY | CLEANING CODES | | |
| India | S | | |

ADDITIONAL PRODUCT NOTES

Ca Tb 117-2013