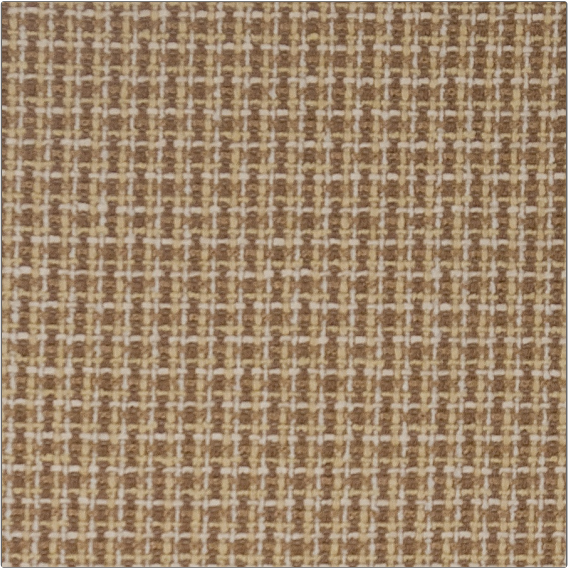


PATTERN	Casson
COLOR	Raffia

BRAND	APPLICATION
Fabricut	Fabric
USES	CATEGORIES
Multipurpose, Upholstery	Wovens, Solids / Small Scale Patterns, Chenille
COLORS	DESIGN TYPES
Taupe / Tan	Texture Plain
SCALE	RAILROADED
Small	Not Railroaded



WIDTH	FINISH	VERTICAL REPEAT	HORIZONTAL REPEAT
54.00 in (137.16 cm)	Soil & Stain Repellent Finish	0.00 in (0.00 cm)	0.00 in (0.00 cm)
CONTENT	BACKING	FIRE CODES	DOUBLE RUBS
100% Polyester		UFAC Class I	Exceeds 51,000 Double Rubs (Wyzenbeek Method)
PRODUCT NUMBER	COUNTRY	CLEANING CODES	
3024003	China	S	

ADDITIONAL PRODUCT NOTES
Soil & Stain Repellent Finish