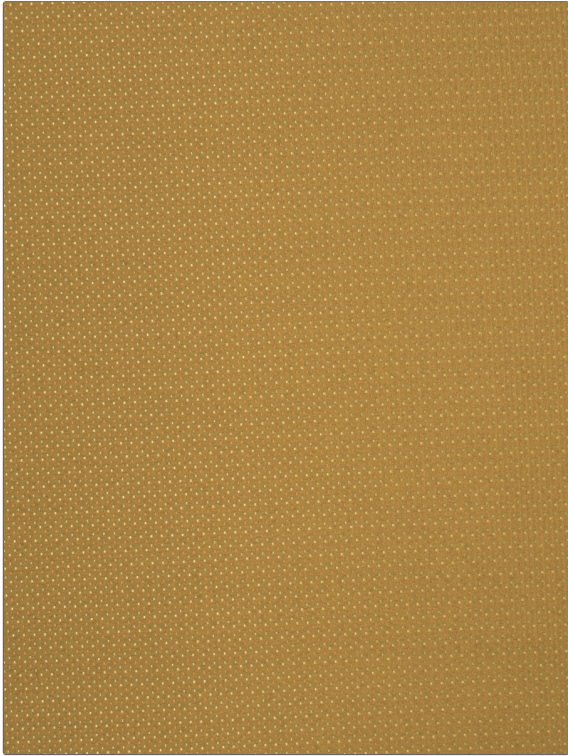


**PATTERN** Prism  
**COLOR** 10

|                                |  |
|--------------------------------|--|
| <b>BRAND</b>                   | <b>APPLICATION</b>   |
| Fabricut                       | Fabric   |
| <b>USES</b>                    | <b>CATEGORIES</b>  |
| Bedding, Drapery, Multipurpose | NFPA 701 FR, Taffeta, Solids / Small Scale Patterns, Faux Silk |
| <b>COLORS</b>                  | <b>DESIGN TYPES</b>  |
| Orange / Spice                 | Small Scale Woven, Dots / Circles                              |
| <b>SCALE</b>                   | <b>RAILROADED</b>  |
| Small                          | Not Railroaded   |



|                      |                                      |   |                       |
|----------------------|--------------------------------------|---|-----------------------|
| <b>WIDTH</b>         | <b>VERTICAL REPEAT</b>               | <b>HORIZONTAL REPEAT</b>                      | <b>CONTENT</b>        |
| 54.00 in (137.16 cm) | 0.60 in (1.52 cm)                    | 0.20 in (0.51 cm)                             | 100% Polyester        |
| <b>BACKING</b>       | <b>FIRE CODES</b>                    | <b>DOUBLE RUBS</b>                            | <b>PRODUCT NUMBER</b> |
|                      | UFAC Class I, Passes "NFPA 701" 2010 | Exceeds 63,000 Double Rubs (Wyzenbeek Method) | 3063910               |
| <b>COUNTRY</b>       | <b>CLEANING CODES</b>                |   |                       |
| Japan                | S                                    |   |                       |

**ADDITIONAL PRODUCT NOTES**

Exclusive Pattern