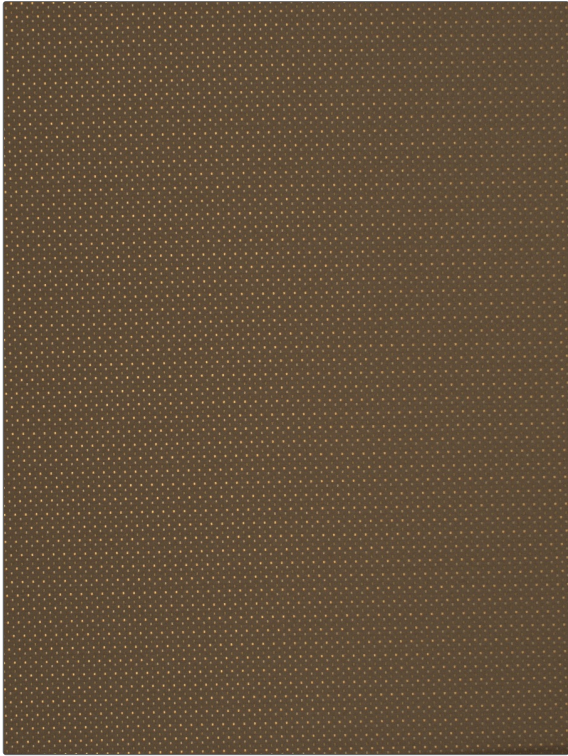


FABRICUT[®] Fabric Product Details

PATTERN Prism
COLOR 33

| | |
|--------------------------------|--|
| BRAND | APPLICATION |
| Fabricut | Fabric |
| USES | CATEGORIES |
| Bedding, Drapery, Multipurpose | NFPA 701 FR, Taffeta, Solids / Small Scale Patterns, Faux Silk |
| COLORS | DESIGN TYPES |
| Brown | Small Scale Woven, Dots / Circles |
| SCALE | RAILROADED |
| Small | Not Railroaded |



| | | | |
|----------------------|--------------------------------------|---|-----------------------|
| WIDTH | VERTICAL REPEAT | HORIZONTAL REPEAT | CONTENT |
| 54.00 in (137.16 cm) | 0.60 in (1.52 cm) | 0.20 in (0.51 cm) | 100% Polyester |
| BACKING | FIRE CODES | DOUBLE RUBS | PRODUCT NUMBER |
| | UFAC Class I, Passes "NFPA 701" 2010 | Exceeds 63,000 Double Rubs (Wyzenbeek Method) | 3063933 |
| COUNTRY | CLEANING CODES | | |
| Japan | S | | |

ADDITIONAL PRODUCT NOTES

Exclusive Pattern