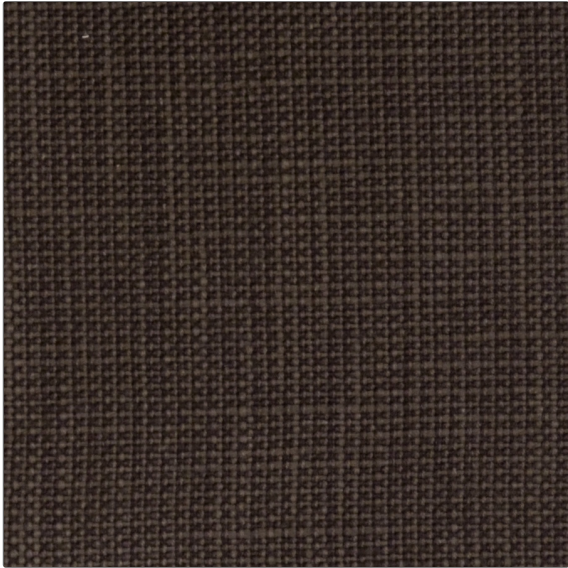


PATTERN Soba
COLOR Charcoal



BRAND	APPLICATION
Fabricut	Fabric
USES	CATEGORIES
Bedding, Drapery, Multipurpose	Wovens, Solids / Small Scale Patterns
COLORS	DESIGN TYPES
Grey	Solid
RAILROADED	
Not Railroaded	

WIDTH	VERTICAL REPEAT	HORIZONTAL REPEAT	CONTENT
54.00 in (137.16 cm)	0.00 in (0.00 cm)	0.00 in (0.00 cm)	50% Cotton 35% Viscose 15% Linen
BACKING	FIRE CODES	DOUBLE RUBS	PRODUCT NUMBER
	UFAC Class I, Passes NFPA 260	Exceeds 20,000 Double Rubs (Wyzenbeek Method)	3067138
COUNTRY	CLEANING CODES		
India	S		

ADDITIONAL PRODUCT NOTES

Exclusive Pattern