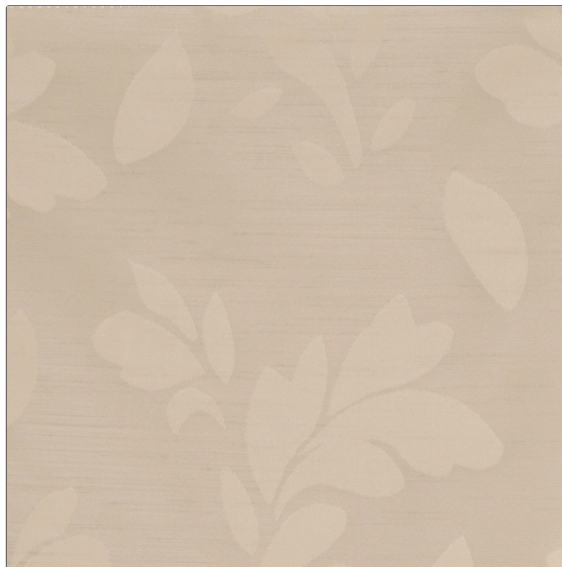


# FABRICUT<sup>®</sup> Fabric Product Details

**PATTERN** Strudel  
**COLOR** 06



**BRAND**

**Fabricut**

**APPLICATION**

**Fabric**

**USES**

**Bedding, Drapery,  
Multipurpose**

**CATEGORIES**

**FR-One, NFPA 701 FR,  
Wovens, Eco /  
Environment Plus**

**COLORS**

**Beige, Taupe / Tan**

**DESIGN TYPES**

**Jacquard Pattern, Leaves,  
Contemporary / Modern**

**RAILROADED**

**Not Railroaded**

**WIDTH**

**57.00 in (144.78 cm)**

**VERTICAL REPEAT**

**13.60 in (34.54 cm)**

**HORIZONTAL REPEAT**

**11.50 in (29.21 cm)**

**CONTENT**

**100% Polyester Inherent FR**

**BACKING**

**FIRE CODES**

**UFAC Class I, Passes  
ASTM-E84, Passes "NFPA  
701" 2004, Passes NFPA  
260, Passes MVS 302,  
Boston Fire Test Bfd, Imo  
Ftpc Part 7 (Drapery)**

**PRODUCT NUMBER**

**3132606**

**COUNTRY**

**Turkey**

**ADDITIONAL PRODUCT NOTES**

**Oeko Tex Standard 100, Exclusive Pattern, Passes Ny / Nj Pa, Passes Faa Part 25.853, Bs 5867 Part 2 Type B & C**