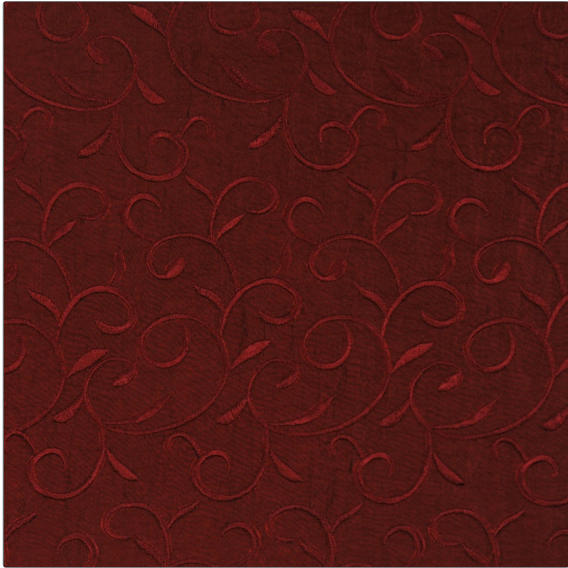


**PATTERN** Treat  
**COLOR** 09



<b>BRAND</b>	<b>APPLICATION</b>
Fabricut	Fabric
<b>USES</b>	<b>CATEGORIES</b>
Bedding, Drapery	Taffeta, Crewels / Embroideries
<b>COLORS</b>	<b>DESIGN TYPES</b>
Burgundy	Embroidery, Scrollwork
<b>SCALE</b>	<b>RAILROADED</b>
Small	Not Railroaded

<b>WIDTH</b>	<b>VERTICAL REPEAT</b>	<b>HORIZONTAL REPEAT</b>	<b>CONTENT</b>
52.00 in (132.08 cm)	11.00 in (27.94 cm)	2.70 in (6.86 cm)	52% Polyester 48% Nylon Ground, 100% Rayon Embroidery
<b>BACKING</b>	<b>FIRE CODES</b>	<b>DOUBLE RUBS</b>	<b>PRODUCT NUMBER</b>
	UFAC Class I	Exceeds 15,000 Double Rubs (Wyzenbeek Method)	3151609
<b>COUNTRY</b>	<b>CLEANING CODES</b>		
China	S		