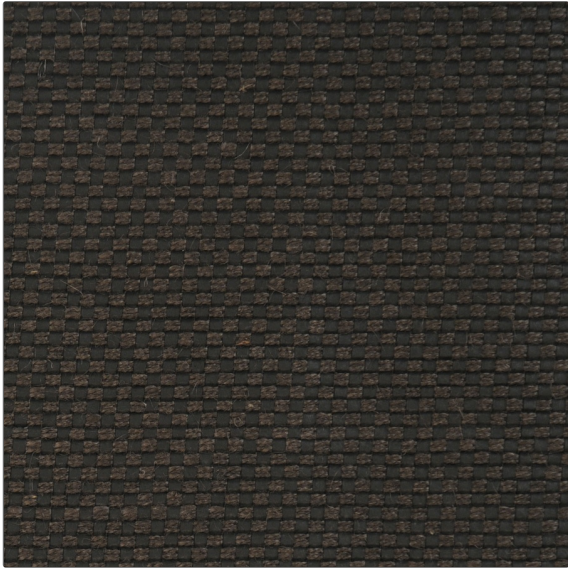


**PATTERN** Ramie  
**COLOR** Onyx



<b>BRAND</b>	<b>APPLICATION</b>
<b>Fabricut</b>	<b>Fabric</b>
<b>USES</b>	<b>CATEGORIES</b>
<b>Upholstery</b>	<b>Wovens</b>
<b>COLORS</b>	<b>DESIGN TYPES</b>
<b>Black</b>	<b>Global / Ethnic, Solid, Check / Plaid, Texture Plain</b>
<b>RAILOADED</b>	
<b>Not Railroaded</b>	

<b>WIDTH</b>	<b>VERTICAL REPEAT</b>	<b>HORIZONTAL REPEAT</b>	<b>CONTENT</b>
<b>54.00 in (137.16 cm)</b>	<b>0.20 in (0.51 cm)</b>	<b>0.20 in (0.51 cm)</b>	<b>50% Jute 44% Cellulose 6% Cotton</b>
<b>BACKING</b>	<b>FIRE CODES</b>	<b>DOUBLE RUBS</b>	<b>PRODUCT NUMBER</b>
<b>100% Cotton Backing</b>	<b>UFAC Class I, Passes NFPA 260</b>	<b>Exceeds 24,000 Double Rubs (Wyzenbeek Method)</b>	<b>3210505</b>
<b>COUNTRY</b>	<b>CLEANING CODES</b>		
<b>Italy</b>	<b>S</b>		

**ADDITIONAL PRODUCT NOTES**

**100% Cotton Backing, Exclusive Pattern**