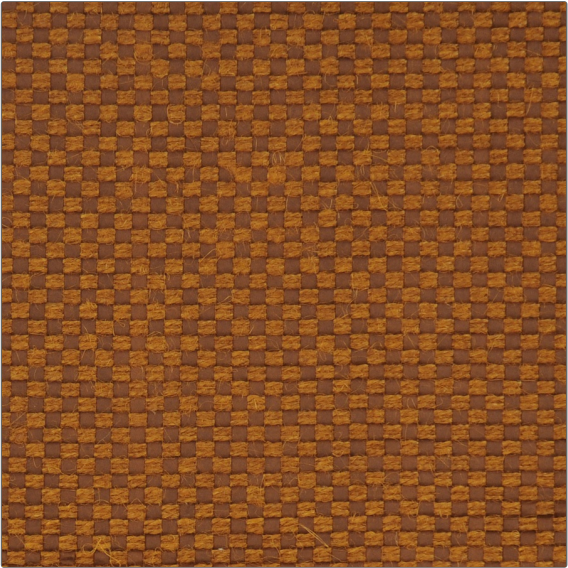


PATTERN	Ramie
COLOR	01

BRAND	APPLICATION
Fabricut	Fabric
USES	CATEGORIES
Upholstery	Wovens
COLORS	DESIGN TYPES
Brown, Orange / Spice	Global / Ethnic, Solid, Check / Plaid, Texture Plain
RAILROADED	
Not Railroaded	



WIDTH	VERTICAL REPEAT	HORIZONTAL REPEAT	CONTENT
54.00 in (137.16 cm)	0.20 in (0.51 cm)	0.20 in (0.51 cm)	50% Jute 44% Cellulose 6% Cotton
BACKING	FIRE CODES	DOUBLE RUBS	PRODUCT NUMBER
100% Cotton Backing	UFAC Class I, Passes NFPA 260	Exceeds 24,000 Double Rubs (Wyzenbeek Method)	3210601
COUNTRY	CLEANING CODES		
Italy	S		

ADDITIONAL PRODUCT NOTES
100% Cotton Backing, Exclusive Pattern