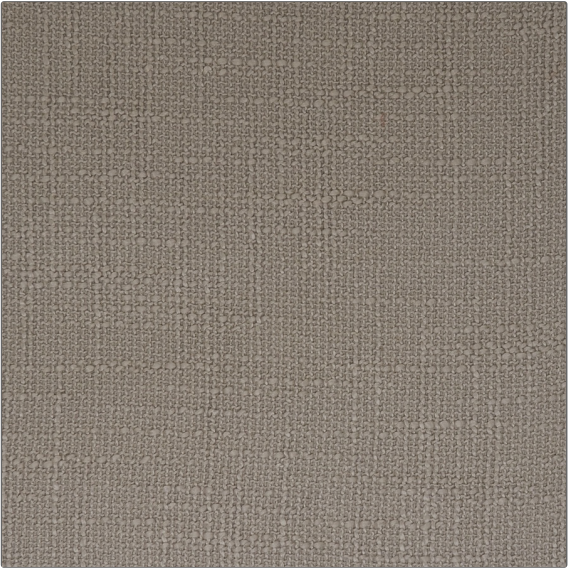


| | |
|---------|--------|
| PATTERN | Lusaka |
| COLOR | Pewter |



| | |
|--------------------------|---------------------------------------|
| BRAND | APPLICATION |
| Fabricut | Fabric |
| USES | CATEGORIES |
| Multipurpose, Upholstery | Wovens, Solids / Small Scale Patterns |
| COLORS | DESIGN TYPES |
| Grey | Texture Plain |
| RAILOADED | |
| Not Railroaded | |

| | | | |
|----------------------|-------------------|---|---------------------------|
| WIDTH | VERTICAL REPEAT | HORIZONTAL REPEAT | CONTENT |
| 54.00 in (137.16 cm) | 0.00 in (0.00 cm) | 0.00 in (0.00 cm) | 80% Polyester 20% Viscose |
| BACKING | FIRE CODES | DOUBLE RUBS | PRODUCT NUMBER |
| | UFAC Class I | Exceeds 30,000 Double Rubs (Wyzenbeek Method) | 3221103 |
| COUNTRY | CLEANING CODES | | |
| China | S | | |

| |
|--------------------------|
| ADDITIONAL PRODUCT NOTES |
| Exclusive Pattern |