

# FABRICUT<sup>®</sup> Fabric Product Details

PATTERN **Jo Jo**  
COLOR **05**

BRAND

**Fabricut**

APPLICATION

**Fabric**

USES

**Drapery**

CATEGORIES

**Sheer, Crewels /  
Embroideries**

COLORS

**Beige, Gold**

DESIGN TYPES

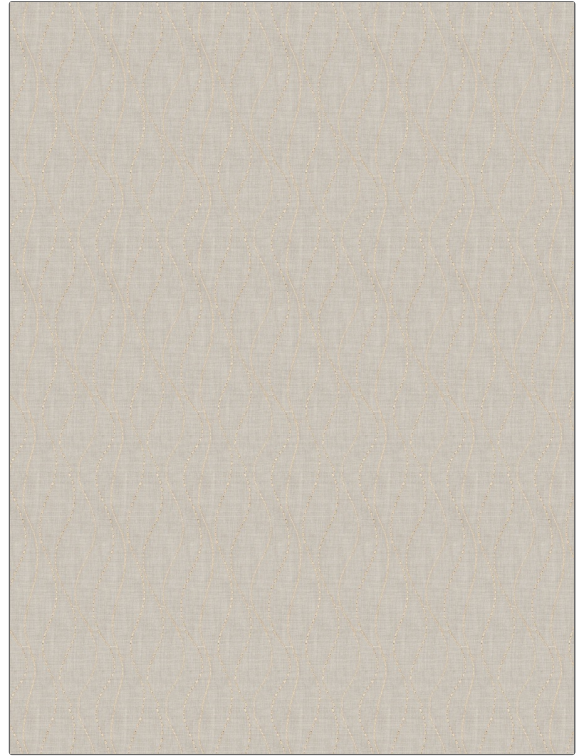
**Embroidery, Contemporary  
/ Modern, Abstract**

SCALE

**Medium**

RAILOADED

**Not Railroaded**



WIDTH

**53.00 in (134.62 cm)**

VERTICAL REPEAT

**10.50 in (26.67 cm)**

HORIZONTAL REPEAT

**4.20 in (10.67 cm)**

CONTENT

**Base: 100% Polyester  
Embroidery: 100%  
Polyester**

BACKING

FIRE CODES

**Passes "NFPA 701" 2004**

PRODUCT NUMBER

**3271605**

COUNTRY

**Turkey**

CLEANING CODES

**S**

ADDITIONAL PRODUCT NOTES

**Embroidered Textiles Are Not, Guaranteed For Precise Color, Matching And Colorfastness., Color Placement Of Embroidery, May Vary. All Measurements, Quoted For Repeats Are, Approximate.**