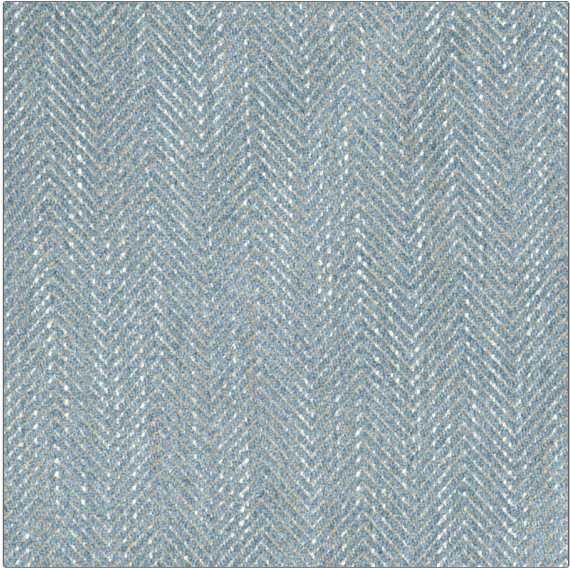


**PATTERN** Pompeii  
**COLOR** Waterfall

|               |                            |
|---------------|----------------------------|
| <b>BRAND</b>  | <b>APPLICATION</b>         |
| Fabricut      | Fabric                     |
| <b>USES</b>   | <b>CATEGORIES</b>          |
| Upholstery    | Wovens, Chenille           |
| <b>COLORS</b> | <b>DESIGN TYPES</b>        |
| Light Blue    | Herringbone, Texture Plain |
| <b>SCALE</b>  | <b>RAILROADED</b>          |
| Small         | Railroaded                 |



|                           |                               |                         |   |
|---------------------------|-------------------------------|-------------------------|---|
| <b>WIDTH</b>              | <b>FINISH</b>                 | <b>VERTICAL REPEAT</b>  | <b>HORIZONTAL REPEAT</b>                      |
| 54.00 in (137.16 cm)      | Soil & Stain Repellent Finish | 2.00 in (5.08 cm)       | 1.25 in (3.18 cm)                             |
| <b>CONTENT</b>            | <b>BACKING</b>                | <b>FIRE CODES</b>       | <b>DOUBLE RUBS</b>                            |
| 60% Polyester 40% Viscose | Light Acrylic Backing         | UFAC Class I / NFPA 260 | Exceeds 51,000 Double Rubs (Wyzenbeek Method) |
| <b>PRODUCT NUMBER</b>     | <b>COUNTRY</b>                | <b>CLEANING CODES</b>   |   |
| 3302608                   | India                         | S                       |   |

**ADDITIONAL PRODUCT NOTES**

Soil & Stain Repellent Finish, Light Acrylic Backing, Shown Railroaded