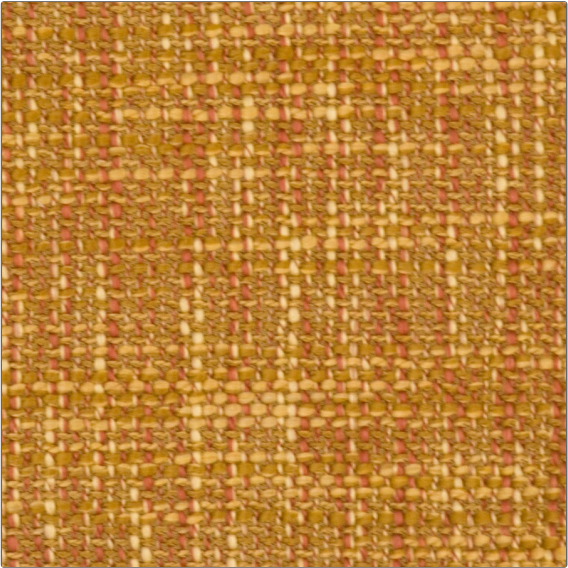


| | |
|---------|----------|
| PATTERN | Meridian |
| COLOR | 27 |

| | |
|----------------------|---|
| BRAND | APPLICATION |
| Fabricut | Fabric |
| USES | CATEGORIES |
| Upholstery | Wovens |
| COLORS | DESIGN TYPES |
| Gold, Orange / Spice | Texture Plain, Contemporary / Modern |
| RAILOADED | |
| Not Railroaded | |



| | | | |
|----------------------|--|---|---------------------------------------|
| WIDTH | VERTICAL REPEAT | HORIZONTAL REPEAT | CONTENT |
| 54.00 in (137.16 cm) | 0.00 in (0.00 cm) | 0.00 in (0.00 cm) | 52% Acrylic 46% Polyester 2% Latex |
| BACKING | FIRE CODES | DOUBLE RUBS | PRODUCT NUMBER |
| 100% Latex Backing | UFAC Class I / NFPA 260, Passes MVS 302 | Exceeds 201,000 Double Rubs (Wyzenbeek Method) | 3462927 |
| COUNTRY | CLEANING CODES | | |
| Turkey | S | | |

| |
|---|
| ADDITIONAL PRODUCT NOTES |
| Passes 33,000 Martindale Tst, Ca Tb 117-2013, 100% Latex Backing, Exclusive Pattern |