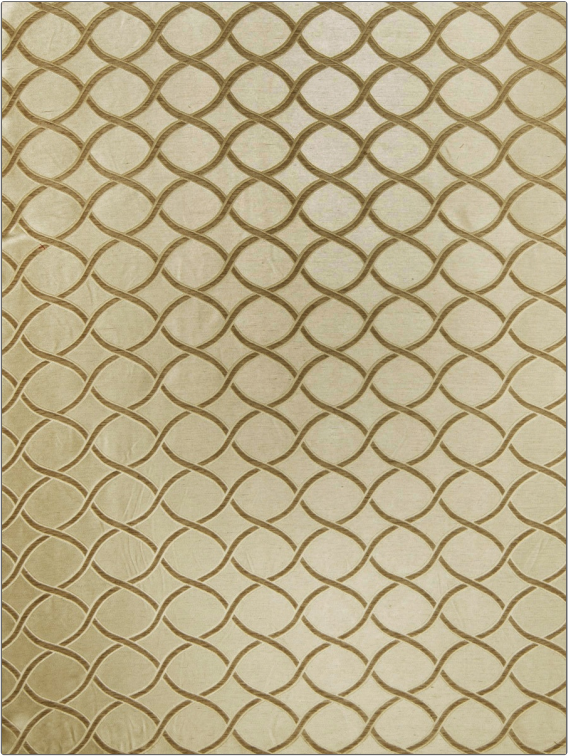


| | |
|---------|-------------|
| PATTERN | Bruckheimer |
| COLOR | Sahara |

| | |
|------------------|--|
| BRAND | APPLICATION |
| Fabricut | Fabric |
| USES | CATEGORIES |
| Bedding, Drapery | Silk |
| COLORS | DESIGN TYPES |
| Gold | Contemporary / Modern, Scrollwork, Ogee |
| SCALE | RAILROADED |
| Medium | Not Railroaded |



| | | | |
|----------------------|-------------------|----------------------|--------------------|
| WIDTH | VERTICAL REPEAT | HORIZONTAL REPEAT | CONTENT |
| 54.00 in (137.16 cm) | 2.87 in (7.29 cm) | 3.50 in (8.89 cm) | 60% Silk 40% Linen |
| BACKING | PRODUCT NUMBER | COUNTRY | CLEANING CODES |
| | 3549906 | No Country Of Origin | S |

| |
|---|
| ADDITIONAL PRODUCT NOTES |
| Exclusive Pattern, Silks Are Not, Guaranteed Against Fading Or, For Precise Color Matching,, Colorfastness And Durability,, Cutting From Current Stock, Is Recommended. |