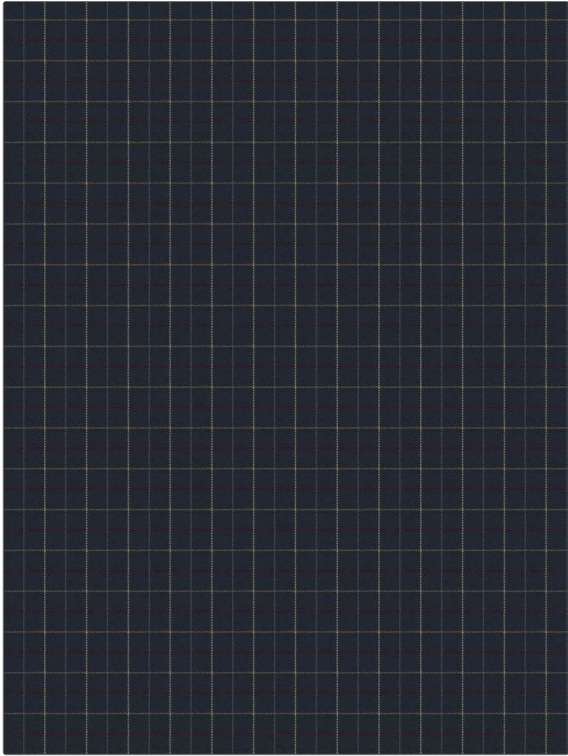


Fabric Product Details

| | |
|----------------|-------------|
| PATTERN | Rory |
| COLOR | 01 |

| | |
|---------------------------------|---|
| BRAND | APPLICATION |
| Fabricut | Fabric |
| USES | CATEGORIES |
| Multipurpose, Upholstery | Wool / Faux Wool, Wovens, Wovens |
| COLORS | DESIGN TYPES |
| Blue | Check / Plaid |
| SCALE | RAILROADED |
| Small | Not Railroaded |



| | | | |
|-----------------------------|---|--|-----------------------|
| WIDTH | VERTICAL REPEAT | HORIZONTAL REPEAT | CONTENT |
| 55.00 in (139.70 cm) | 2.00 in (5.08 cm) | 2.00 in (5.08 cm) | 100% Polyester |
| BACKING | FIRE CODES | DOUBLE RUBS | PRODUCT NUMBER |
| | Cal Tb 117-2013, UFAC Class I / NFPA 260 | Exceeds 51,000 Double Rubs (Wyzenbeek Method) | 3552101 |
| COUNTRY | CLEANING CODES | | |
| China | S | | |