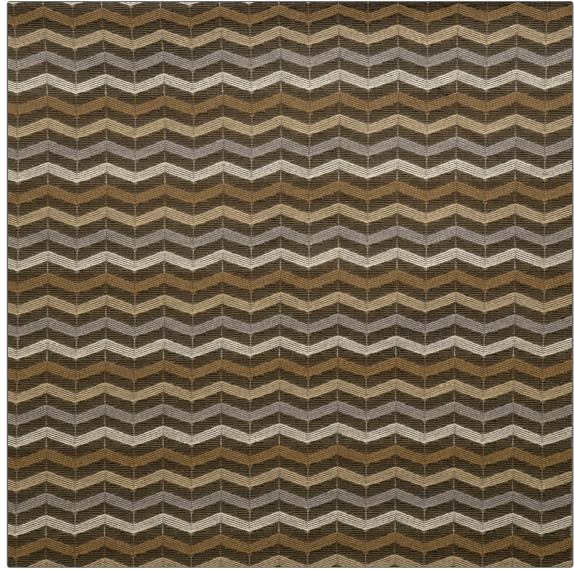


PATTERN Maxwell
COLOR Pewter

BRAND	APPLICATION
Fabricut	Fabric
USES	CATEGORIES
Upholstery	Wovens
COLORS	DESIGN TYPES
Grey, Light Blue, Taupe / Tan	Herringbone, Stripes, Contemporary / Modern
SCALE	RAILROADED
Small	Not Railroaded



WIDTH	FINISH	VERTICAL REPEAT	HORIZONTAL REPEAT
54.00 in (137.16 cm)	Soil & Stain Repellent Finish	1.70 in (4.32 cm)	1.00 in (2.54 cm)
CONTENT	BACKING	FIRE CODES	DOUBLE RUBS
100% Recycled Polyester		UFAC Class I	Exceeds 30,000 Double Rubs (Wyzenbeek Method)
PRODUCT NUMBER	COUNTRY	CLEANING CODES	
3599301	USA	S	

ADDITIONAL PRODUCT NOTES

Soil & Stain Repellent Finish, Exclusive Pattern, Eco / Environment Plus