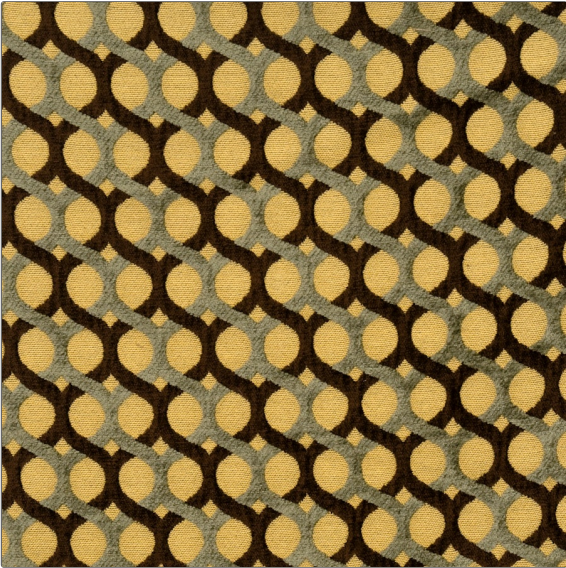


PATTERN	Armstrong
COLOR	Patina

BRAND	APPLICATION
Fabricut	Fabric
USES	CATEGORIES
Upholstery	Wovens, Chenille
COLORS	DESIGN TYPES
Brown, Aqua / Teal	Ogee
SCALE	RAILROADED
Small	Not Railroaded



WIDTH	FINISH	VERTICAL REPEAT	HORIZONTAL REPEAT
54.00 in (137.16 cm)	Soil & Stain Repellent Finish	2.50 in (6.35 cm)	2.00 in (5.08 cm)
CONTENT	BACKING	FIRE CODES	DOUBLE RUBS
59% Rayon 21% Cotton 20% Polyester		UFAC Class I, Passes NFPA 260	Exceeds 21,000 Double Rubs (Wyzenbeek Method)
PRODUCT NUMBER	COUNTRY	CLEANING CODES	
3610701	India	S	

ADDITIONAL PRODUCT NOTES
Soil & Stain Repellent Finish, Exclusive Pattern