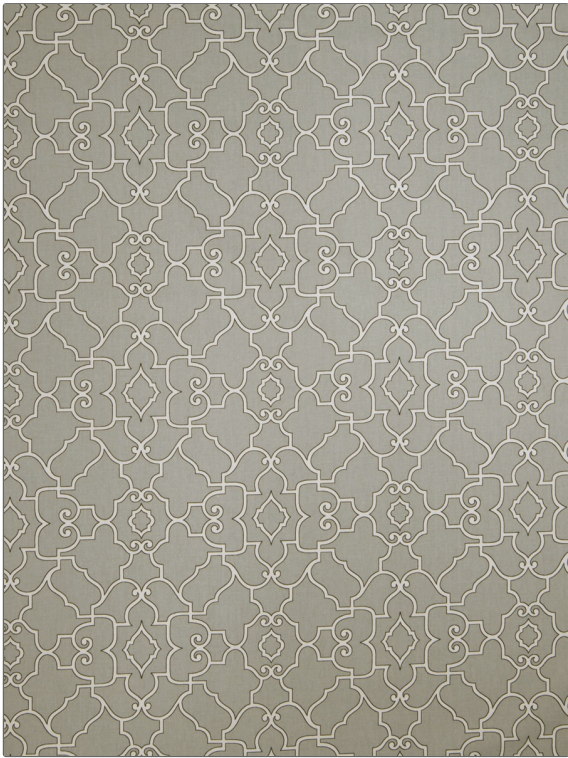


**PATTERN** Spyker  
**COLOR** Sterling

|                  |  |
|------------------|--|
| <b>BRAND</b>     | <b>APPLICATION</b>                                       |
| Fabricut         | Fabric   |
| <b>USES</b>      | <b>CATEGORIES</b>  |
| Bedding, Drapery | Prints   |
| <b>COLORS</b>    | <b>DESIGN TYPES</b>                                      |
| Grey             | Lattice / Fretwork, Print Pattern, Contemporary / Modern |
| <b>SCALE</b>     | <b>RAILROADED</b>  |
| Medium           | Not Railroaded   |



|                       |                               |                               |   |
|-----------------------|-------------------------------|-------------------------------|---|
| <b>WIDTH</b>          | <b>FINISH</b>                 | <b>VERTICAL REPEAT</b>        | <b>HORIZONTAL REPEAT</b>                      |
| 54.00 in (137.16 cm)  | Soil & Stain Repellent Finish | 13.50 in (34.29 cm)           | 13.50 in (34.29 cm)                           |
| <b>CONTENT</b>        | <b>BACKING</b>                | <b>FIRE CODES</b>             | <b>DOUBLE RUBS</b>                            |
| 100% Cotton           |                               | UFAC Class I, Passes NFPA 260 | Exceeds 15,000 Double Rubs (Wyzenbeek Method) |
| <b>PRODUCT NUMBER</b> | <b>COUNTRY</b>                | <b>CLEANING CODES</b>         |   |
| 3623002               | USA                           | S                             |   |

**ADDITIONAL PRODUCT NOTES**

Soil & Stain Repellent Finish