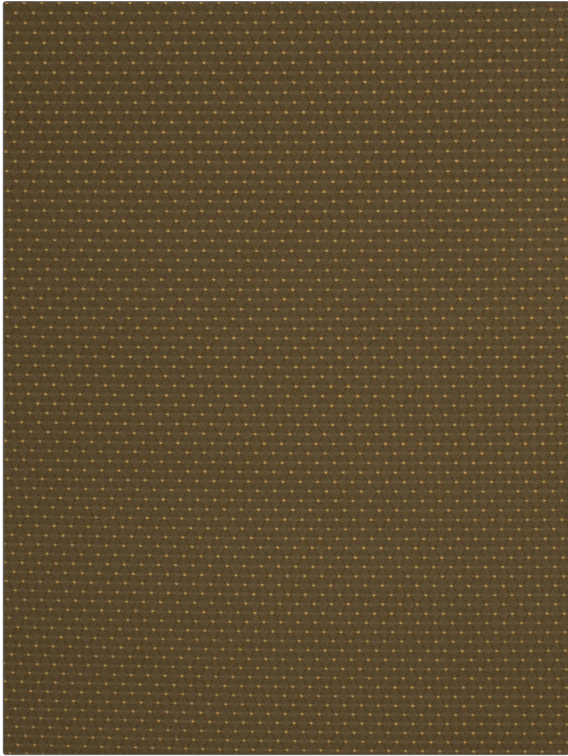


FABRICUT[®] Fabric Product Details

| | |
|----------------|-------------------|
| PATTERN | Tuscaloosa |
| COLOR | Thyme |

| | |
|---|--------------------------------------|
| BRAND | APPLICATION |
| Fabricut | Fabric |
| USES | CATEGORIES |
| Bedding, Drapery, Multipurpose, Upholstery | Solids / Small Scale Patterns |
| COLORS | DESIGN TYPES |
| Green | Diamond |
| SCALE | RAILROADED |
| Small | Not Railroaded |



| | | | |
|-----------------------------|--------------------------------------|--|----------------------------------|
| WIDTH | VERTICAL REPEAT | HORIZONTAL REPEAT | CONTENT |
| 54.00 in (137.16 cm) | 0.30 in (0.76 cm) | 0.30 in (0.76 cm) | 71% Viscose 29% Polyester |
| BACKING | FIRE CODES | DOUBLE RUBS | PRODUCT NUMBER |
| | UFAC Class I, Passes NFPA 260 | Exceeds 51,000 Double Rubs (Wyzenbeek Method) | 3680204 |
| COUNTRY | CLEANING CODES | | |
| India | S | | |