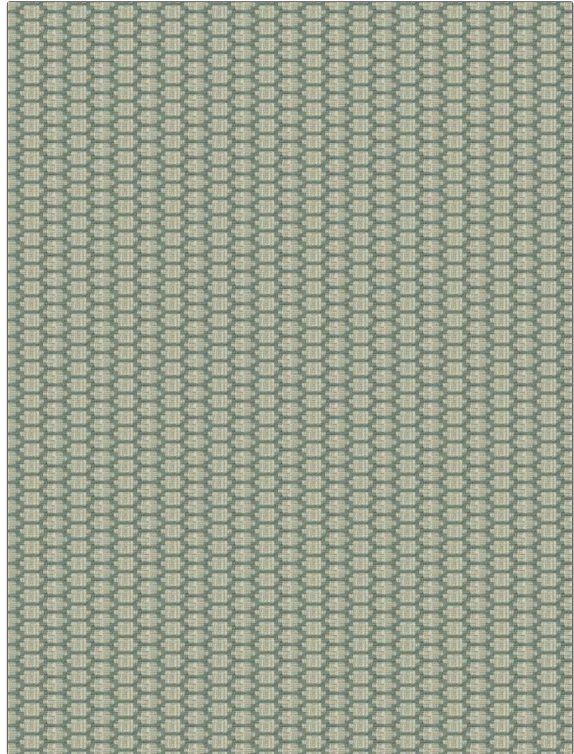


Fabric Product Details

PATTERN	Workshop
COLOR	Caribe
BRAND	APPLICATION
Fabricut	Fabric
USES	CATEGORIES
Upholstery	Crypton Home, Easy To Clean, Wovens, Wovens, Chenille, Lining
BOOK	COLORS
Crypton Home Performance By Color Horizon	Aqua / Teal
DESIGN TYPES	SCALE
Geometric, Jacquard Pattern, Small Scale Woven, Contemporary / Modern	Small
RAILROADED	
Not Railroaded	



WIDTH	FINISH	VERTICAL REPEAT	HORIZONTAL REPEAT
55.00 in (139.70 cm)	Crypton Home	0.75 in (1.90 cm)	2.25 in (5.72 cm)
CONTENT	BACKING	FIRE CODES	DOUBLE RUBS
62% Polyester, 35% Rayon, 3% Cotton	100% Acrylic Backing	Cal Tb 117-2013, UFAC Class I / NFPA 260	Exceeds 51,000 Double Rubs (Wyzenbeek Method)
PRODUCT NUMBER	DATE BOOKED	COUNTRY	CLEANING CODES
3945405	09/2020	USA	W

ADDITIONAL PRODUCT NOTES
Crypton Home, Nanotex, 100% Acrylic Backing, Exclusive Pattern