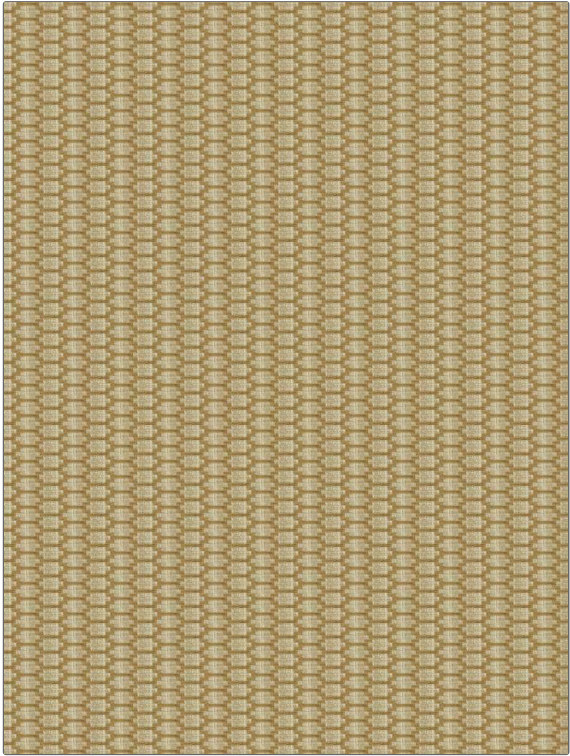


# Fabric Product Details

**PATTERN** Workshop  
**COLOR** Cashew

<b>BRAND</b>	<b>APPLICATION</b>
Fabricut	Fabric
<b>USES</b>	<b>CATEGORIES</b>
Upholstery	Crypton Home, Easy To Clean, Wovens, Wovens, Chenille, Lining
<b>BOOK</b>	<b>COLORS</b>
Crypton Home Performance By Color Canyon	Beige
<b>DESIGN TYPES</b>	<b>SCALE</b>
Geometric, Jacquard Pattern, Small Scale Woven, Contemporary / Modern	Small
<b>RAILROADED</b>	
Not Railed	



<b>WIDTH</b>	<b>FINISH</b>	<b>VERTICAL REPEAT</b>	<b>HORIZONTAL REPEAT</b>
55.00 in (139.70 cm)	Crypton Home	0.75 in (1.90 cm)	2.25 in (5.72 cm)
<b>CONTENT</b>	<b>BACKING</b>	<b>FIRE CODES</b>	<b>DOUBLE RUBS</b>
62% Polyester, 35% Rayon, 3% Cotton	100% Acrylic Backing	Cal Tb 117-2013, UFAC Class I / NFPA 260	Exceeds 51,000 Double Rubs (Wyzenbeek Method)
<b>PRODUCT NUMBER</b>	<b>DATE BOOKED</b>	<b>COUNTRY</b>	<b>CLEANING CODES</b>
3945412	09/2020	USA	W

**ADDITIONAL PRODUCT NOTES**  
 Crypton Home, Nanotex, 100% Acrylic Backing, Exclusive Pattern