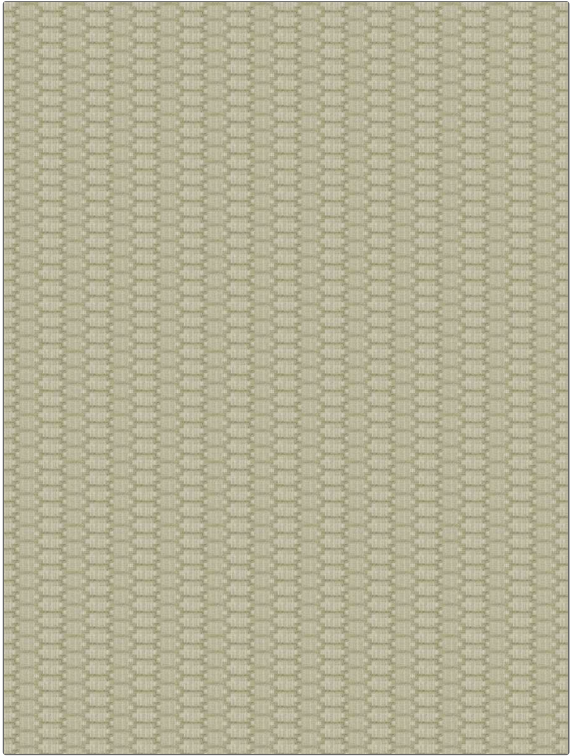


Fabric Product Details

PATTERN Workshop
COLOR 06

BRAND	APPLICATION
Fabricut	Fabric
USES	CATEGORIES
Upholstery	Crypton Home, Easy To Clean, Wovens, Wovens, Chenille, Lining
COLORS	DESIGN TYPES
Beige	Geometric, Jacquard Pattern, Small Scale Woven, Contemporary / Modern
SCALE	RAILROADED
Small	Not Railroaded



WIDTH	FINISH	VERTICAL REPEAT	HORIZONTAL REPEAT
55.00 in (139.70 cm)	Crypton Home	0.75 in (1.90 cm)	2.25 in (5.72 cm)
CONTENT	BACKING	FIRE CODES	DOUBLE RUBS
62% Polyester, 35% Rayon, 3% Cotton	100% Acrylic Backing	Cal Tb 117-2013, UFAC Class I / NFPA 260	Exceeds 51,000 Double Rubs (Wyzenbeek Method)
PRODUCT NUMBER	COUNTRY	CLEANING CODES	
3945606	USA	W	

ADDITIONAL PRODUCT NOTES

Crypton Home, Nanotex, 100% Acrylic Backing, Exclusive Pattern