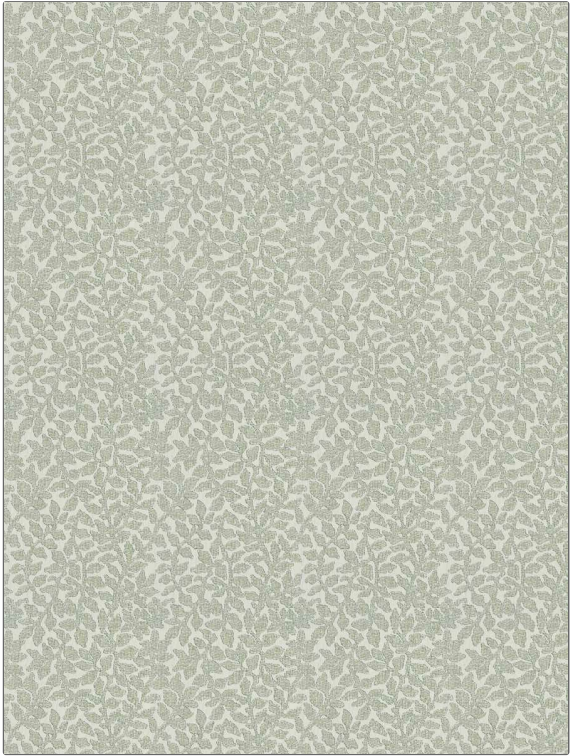


Fabric Product Details

PATTERN Follette
COLOR Emerald

BRAND	APPLICATION
Fabricut	Fabric
USES	CATEGORIES
Bedding, Drapery, Multipurpose, Upholstery	Wovens
BOOK	COLORS
Kendall Wilkinson Vignettes (3 Books) Jardiniere	Green, Aqua / Teal
DESIGN TYPES	SCALE
Leaves	Medium
RAILROADED	
Not Railroaded	



WIDTH	VERTICAL REPEAT	HORIZONTAL REPEAT	CONTENT
56.00 in (142.24 cm)	20.50 in (52.07 cm)	14.00 in (35.56 cm)	50% Cotton, 36% Rayon, 14% Polyester
BACKING	FIRE CODES	DOUBLE RUBS	PRODUCT NUMBER
	UFAC Class I / NFPA 260	Exceeds 15,000 Double Rubs (Wyzenbeek Method)	0421601
DATE BOOKED	COUNTRY	CLEANING CODES	
07/2019	China	S	

ADDITIONAL PRODUCT NOTES

Exclusive Pattern