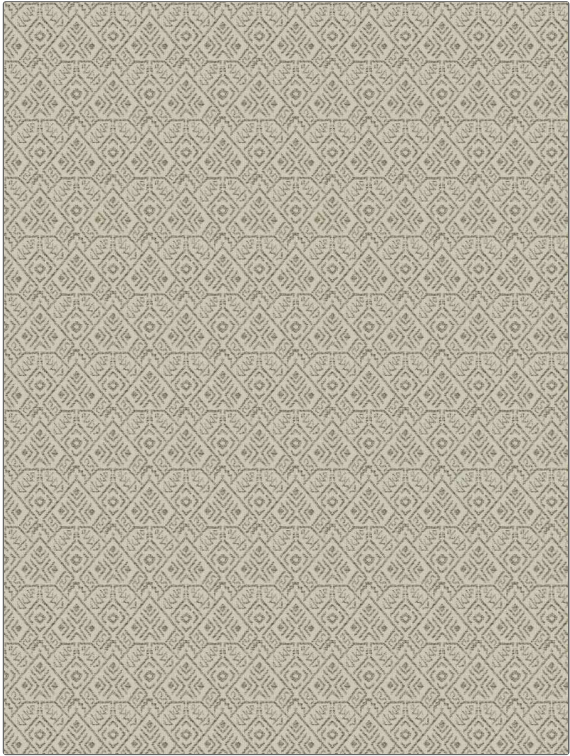


Fabric Product Details

PATTERN Canyon Weave
COLOR 03

| | |
|---------------|---------------------|
| BRAND | APPLICATION |
| Fabricut | Fabric |
| USES | CATEGORIES |
| Upholstery | Wovens |
| COLORS | DESIGN TYPES |
| Beige, Linen | Global / Ethnic |
| SCALE | RAILROADED |
| Medium | Not Railroaded |



| | | | |
|----------------------|-------------------------|---|---------------------------|
| WIDTH | VERTICAL REPEAT | HORIZONTAL REPEAT | CONTENT |
| 55.00 in (139.70 cm) | 5.25 in (13.34 cm) | 3.50 in (8.89 cm) | 62% Cotton, 38% Polyester |
| BACKING | FIRE CODES | DOUBLE RUBS | PRODUCT NUMBER |
| | UFAC Class I / NFPA 260 | Exceeds 36,000 Double Rubs (Wyzenbeek Method) | 0421903 |
| COUNTRY | CLEANING CODES | | |
| China | S | | |

ADDITIONAL PRODUCT NOTES

Ca Tb 117-2013, Exclusive Pattern