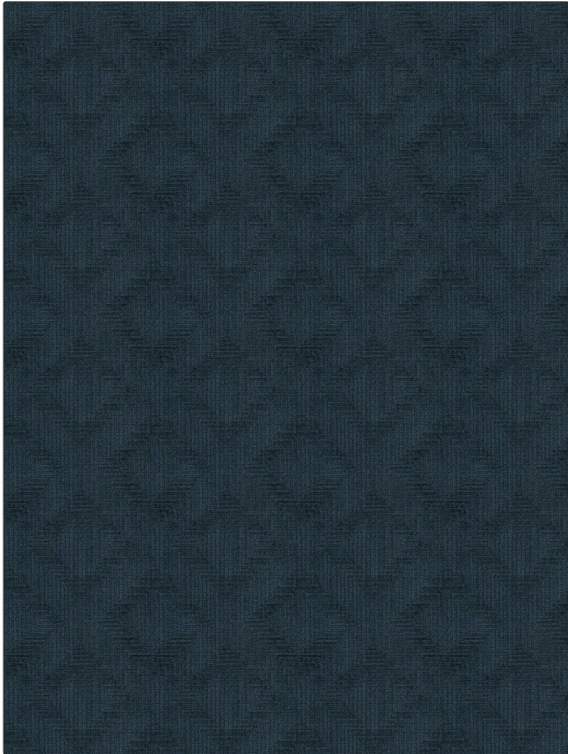


# Fabric Product Details

**PATTERN** Velvet Maze  
**COLOR** Sapphire



|   |                                    |
|---|------------------------------------|
| <b>BRAND</b>                                    | <b>APPLICATION</b>                 |
| Fabricut  | Fabric                             |
| <b>USES</b>                                     | <b>CATEGORIES</b>                  |
| Upholstery                                      | Velvet / Grospoint, Wovens, Wovens |
| <b>BOOK</b>                                     | <b>COLORS</b>                      |
| Kendall Wilkinson Vignettes (3 Books) Coastline | Blue                               |
| <b>DESIGN TYPES</b>                             | <b>SCALE</b>                       |
| Geometric, Contemporary / Modern, Diamond       | Medium                             |
| <b>RAILROADED</b>                               |                                    |
| Not Railroaded                                  |                                    |

|  |   |                          |                                    |
|--|---|--------------------------|------------------------------------|
| <b>WIDTH</b>                             | <b>VERTICAL REPEAT</b>                        | <b>HORIZONTAL REPEAT</b> | <b>CONTENT</b>                     |
| 55.00 in (139.70 cm)                     | 7.00 in (17.78 cm)                            | 7.00 in (17.78 cm)       | 70% Rayon, 25% Polyester, 5% Linen |
| <b>FIRE CODES</b>                        | <b>DOUBLE RUBS</b>                            | <b>PRODUCT NUMBER</b>    | <b>DATE BOOKED</b>                 |
| Cal Tb 117-2013, UFAC Class I / NFPA 260 | Exceeds 24,000 Double Rubs (Wyzenbeek Method) | 0425605                  | 07/2019                            |
| <b>COUNTRY</b>                           | <b>CLEANING CODES</b>                         |                          |                                    |
| China                                    | S   |                          |                                    |

**ADDITIONAL PRODUCT NOTES**

Light Acrylic Backing, Exclusive Pattern