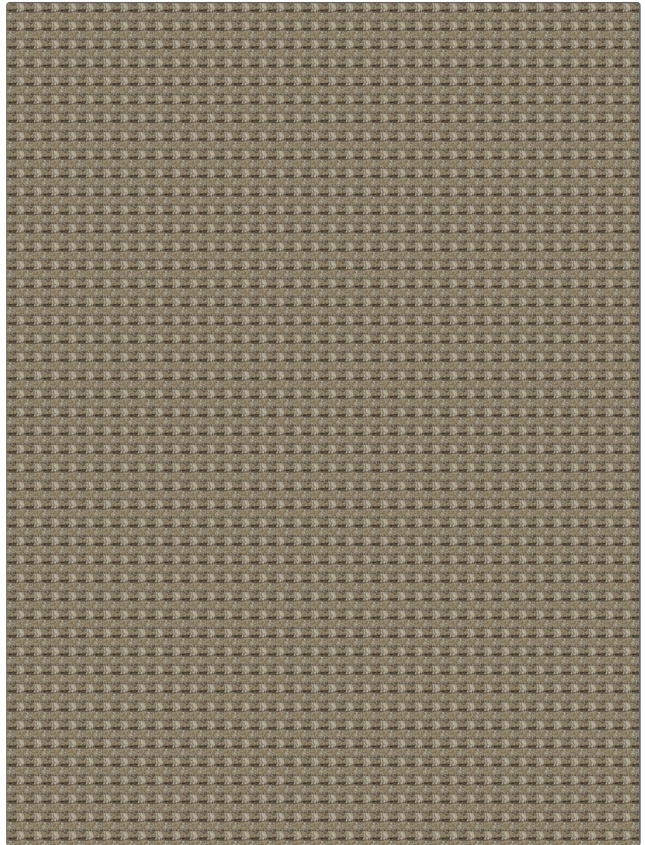


# FABRICUT Fabric Product Details

PATTERN	<b>Annamite</b>
COLOR	<b>Taupe</b>

BRAND	APPLICATION
<b>Fabricut</b>	<b>Fabric</b>
USES	CATEGORIES
<b>Upholstery</b>	<b>Fibreguard, Wovens, Solids / Small Scale Patterns, Chenille, Environment Plus / Green</b>
BOOK	COLORS
<b>Fibreguard Performance By Color (4 Book) Sand</b>	<b>Taupe / Tan</b>
DESIGN TYPES	RAILROADED
<b>Small Scale Woven, Solid, Texture Plain</b>	<b>Not Railroaded</b>



WIDTH	FINISH	VERTICAL REPEAT	HORIZONTAL REPEAT
<b>55.00 in (139.70 cm)</b>	<b>Fibreguard</b>	<b>0.25 in (0.64 cm)</b>	<b>0.37 in (0.94 cm)</b>
CONTENT	FIRE CODES	DOUBLE RUBS	PRODUCT NUMBER
<b>61% Acrylic, 39% Polyester</b>	<b>Cal Tb 117-2013, UFAC Class I / NFPA 260, Passes MVS 302</b>	<b>Exceeds 35,000 Double Rubs (Wyzenbeek Method)</b>	<b>0440107</b>
DATE BOOKED	COUNTRY	CLEANING CODES	
<b>07/2019</b>	<b>Turkey</b>	<b>WW</b>	

ADDITIONAL PRODUCT NOTES
<b>Fibreguard, Passes 70,000 Martindale Tst, Oeko Tex Standard 100, Exclusive Pattern, Environment Plus</b>