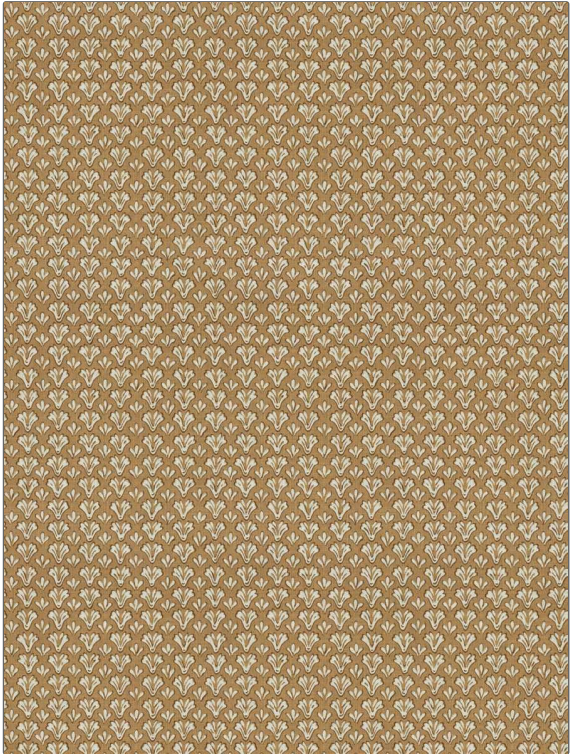


**PATTERN** Inspiration  
**COLOR** Wheat

<b>BRAND</b>	<b>APPLICATION</b>
Fabricut	Fabric
<b>USES</b>	<b>CATEGORIES</b>
Bedding, Drapery, Multipurpose, Upholstery	Solids / Small Scale Patterns, Prints
<b>BOOK</b>	<b>COLORS</b>
Natural Home Terra Spice	Brown
<b>DESIGN TYPES</b>	<b>SCALE</b>
Floral, Print Pattern, Contemporary / Modern	Small
<b>RAILOADED</b>	
Not Railed	



<b>WIDTH</b>	<b>VERTICAL REPEAT</b>	<b>HORIZONTAL REPEAT</b>	<b>CONTENT</b>
54.00 in (137.16 cm)	11.87 in (30.15 cm)	9.00 in (22.86 cm)	100% Cotton
<b>BACKING</b>	<b>FIRE CODES</b>	<b>DOUBLE RUBS</b>	<b>PRODUCT NUMBER</b>
	UFAC Class I / NFPA 260	Exceeds 48,000 Double Rubs (Wyzenbeek Method)	4522202
<b>DATE BOOKED</b>	<b>COUNTRY</b>	<b>CLEANING CODES</b>	
09/2021	China	S	

**ADDITIONAL PRODUCT NOTES**

Ca Tb 117-2013, Exclusive Pattern