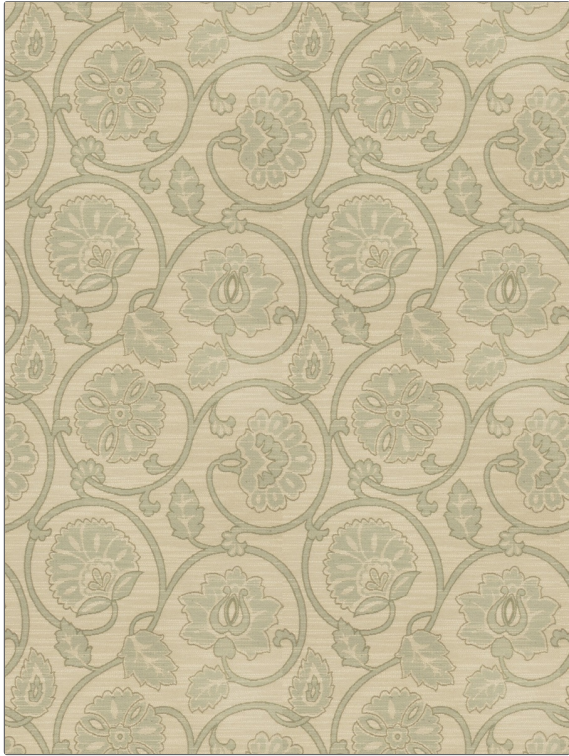


**PATTERN** Calista  
**COLOR** Opal

<b>BRAND</b>	<b>APPLICATION</b>
Fabricut	Fabric
<b>USES</b>	<b>CATEGORIES</b>
Bedding, Drapery, Multipurpose	Wovens
<b>COLORS</b>	<b>DESIGN TYPES</b>
Aqua / Teal	Floral, Jacquard Pattern
<b>SCALE</b>	<b>DIRECTION SHOWN</b>
Medium	Up the Bolt



<b>WIDTH</b>	<b>VERTICAL REPEAT</b>	<b>HORIZONTAL REPEAT</b>	<b>CONTENT</b>
54.00 in (137.16 cm)	15.25 in (38.74 cm)	13.50 in (34.29 cm)	40% Rayon, 31% Polyester, 29% Cotton
<b>BACKING</b>	<b>FIRE CODES</b>	<b>DOUBLE RUBS</b>	<b>PRODUCT NUMBER</b>
	UFAC Class I, Passes NFPA 260	Exceeds 21,000 Double Rubs (Wyzenbeek Method)	4670302
<b>COUNTRY</b>	<b>CLEANING CODES</b>		
China	S		