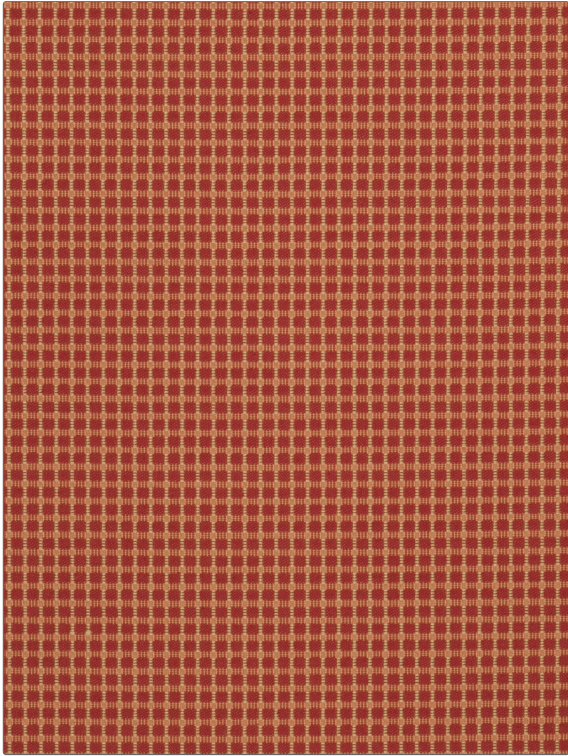


PATTERN	Coralla
COLOR	Henna

BRAND	APPLICATION
Fabricut	Fabric
USES	CATEGORIES
Bedding, Drapery, Multipurpose	Wovens
COLORS	DESIGN TYPES
Orange / Spice, Red	Small Scale Woven, Check / Plaid
SCALE	DIRECTION SHOWN
Small	Up the Bolt



WIDTH	VERTICAL REPEAT	HORIZONTAL REPEAT	CONTENT
54.00 in (137.16 cm)	12.25 in (31.12 cm)	8.50 in (21.59 cm)	69% Polyester, 31% Cotton
BACKING	FIRE CODES	DOUBLE RUBS	PRODUCT NUMBER
	UFAC Class I, Passes NFPA 260	Exceeds 51,000 Double Rubs (Wyzenbeek Method)	4670703
COUNTRY	CLEANING CODES		
China	S		