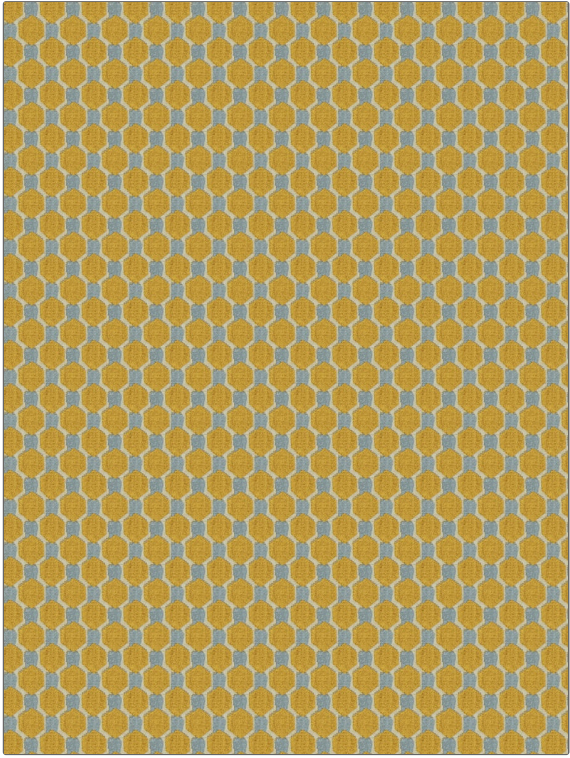


# Fabric Product Details

<b>PATTERN</b>	<b>Chima Hex</b>
<b>COLOR</b>	<b>Amber Gold</b>
<b>BRAND</b>	<b>APPLICATION</b>
<b>Fabricut</b>	<b>Fabric</b>
<b>USES</b>	<b>CATEGORIES</b>
<b>Upholstery</b>	<b>Velvet / Grospoint, Wovens</b>
<b>BOOK</b>	<b>COLORS</b>
<b>Collective Threads (4 Books) Clay</b>	<b>Blue, Gold</b>
<b>DESIGN TYPES</b>	<b>SCALE</b>
<b>Geometric</b>	<b>Small</b>
<b>RAILROADED</b>	
<b>Not Railroaded</b>	



<b>WIDTH</b>	<b>VERTICAL REPEAT</b>	<b>HORIZONTAL REPEAT</b>	<b>CONTENT</b>
<b>55.00 in (139.70 cm)</b>	<b>2.00 in (5.08 cm)</b>	<b>2.00 in (5.08 cm)</b>	<b>70% Rayon, 25% Polyester, 5% Linen</b>
<b>BACKING</b>	<b>FIRE CODES</b>	<b>DOUBLE RUBS</b>	<b>PRODUCT NUMBER</b>
<b>Light Acrylic Backing</b>	<b>UFAC Class I / NFPA 260</b>	<b>Exceeds 12,000 Double Rubs (Wyzenbeek Method)</b>	<b>0468801</b>
<b>DATE BOOKED</b>	<b>COUNTRY</b>	<b>CLEANING CODES</b>	
<b>02/2020</b>	<b>China</b>	<b>S</b>	

<b>ADDITIONAL PRODUCT NOTES</b>
<b>Ca Tb 117-2013, Light Acrylic Backing, Exclusive Pattern</b>