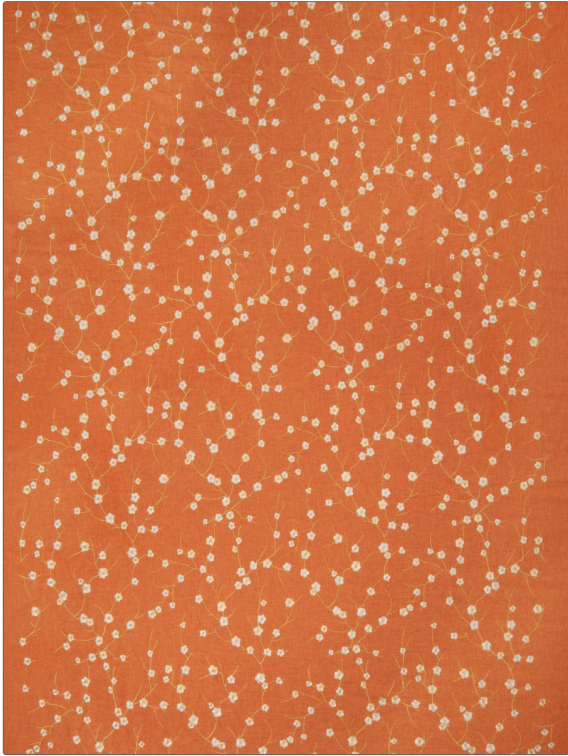


PATTERN Capdeco
COLOR Tangerine

| | |
|------------------|---|
| BRAND | APPLICATION |
| Fabricut | Fabric |
| USES | CATEGORIES |
| Bedding, Drapery | Crewels / Embroideries, Linen |
| COLORS | DESIGN TYPES |
| Orange / Spice | Embroidery, Floral, Asian, Contemporary / Modern |
| SCALE | RAILROADED |
| Medium | Not Railroaded |



| | | | |
|-----------------------|----------------------------------|--------------------------|---|
| WIDTH | VERTICAL REPEAT | HORIZONTAL REPEAT | CONTENT |
| 46.00 in (116.84 cm) | 22.50 in (57.15 cm) | 23.00 in (58.42 cm) | 55% Linen 45% Rayon, Embroidery 100% Rayon |
| BACKING | FIRE CODES | PRODUCT NUMBER | COUNTRY |
| | UFAC Class I, Passes NFPA 260 | 4705301 | China |
| CLEANING CODES | | | |
| S | | | |

ADDITIONAL PRODUCT NOTES

Embroidered Textiles Are Not, Guaranteed For Precise Color, Matching And Colorfastness., Color Placement Of Embroidery, May Vary. All Measurements, Quoted For Repeats Are, Approximate.