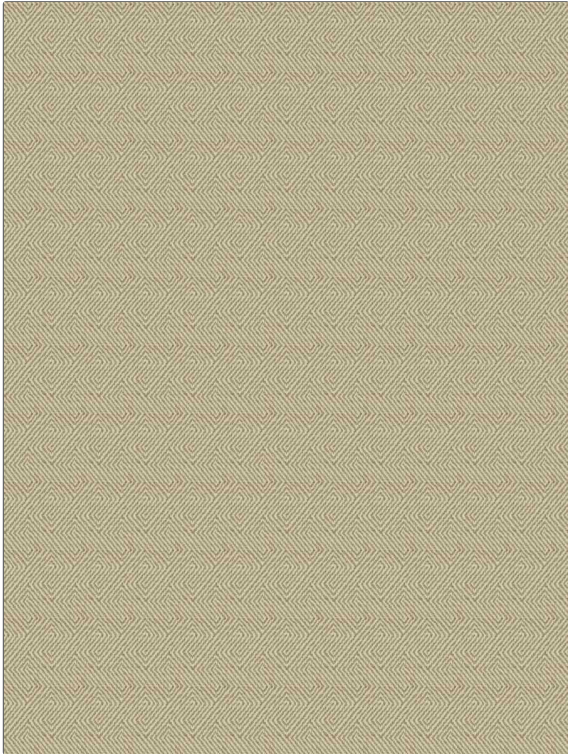


**PATTERN** Resting Point  
**COLOR** Linen

<b>BRAND</b>	<b>APPLICATION</b>
Fabricut	Fabric
<b>USES</b>	<b>CATEGORIES</b>
Upholstery	Wovens
<b>BOOK</b>	<b>COLORS</b>
Natural Home Cottonwood	Taupe / Tan, Off White / Ivory
<b>DESIGN TYPES</b>	<b>SCALE</b>
Geometric, Jacquard Pattern, Lattice / Fretwork, Small Scale Woven, Contemporary / Modern	Small
<b>RAILROADED</b>	
Not Railroaded	



<b>WIDTH</b>	<b>VERTICAL REPEAT</b>	<b>HORIZONTAL REPEAT</b>	<b>CONTENT</b>
54.00 in (137.16 cm)	3.25 in (8.26 cm)	2.25 in (5.72 cm)	56% Cotton, 30% Viscose, 14% Polyester
<b>BACKING</b>	<b>FIRE CODES</b>	<b>DOUBLE RUBS</b>	<b>PRODUCT NUMBER</b>
	UFAC Class I / NFPA 260	Exceeds 36,000 Double Rubs (Wyzenbeek Method)	4739601
<b>DATE BOOKED</b>	<b>COUNTRY</b>	<b>CLEANING CODES</b>	
09/2021	Turkey	S	

**ADDITIONAL PRODUCT NOTES**

Ca Tb 117-2013, Exclusive Pattern