

**PATTERN** Homegrown  
**COLOR** 02

**BRAND**  
**Fabricut**

**APPLICATION**  
**Fabric**

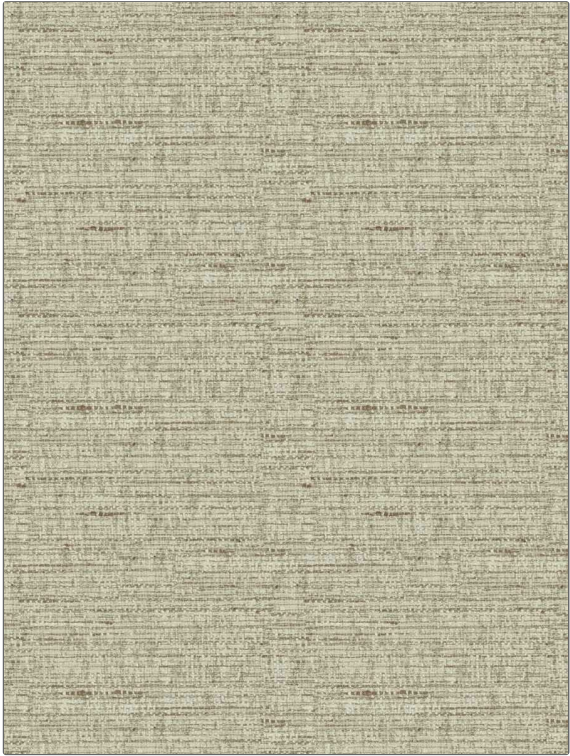
**USES**  
**Upholstery**

**CATEGORIES**  
**Wovens**

**COLORS**  
**Grey, Taupe / Tan**

**DESIGN TYPES**  
**Texture Plain**

**RAILROADED**  
**Not Railroaded**



<b>WIDTH</b>	<b>VERTICAL REPEAT</b>	<b>HORIZONTAL REPEAT</b>	<b>CONTENT</b>
55.00 in (139.70 cm)	0.00 in (0.00 cm)	0.00 in (0.00 cm)	100% Polyester
<b>BACKING</b>	<b>FIRE CODES</b>	<b>DOUBLE RUBS</b>	<b>PRODUCT NUMBER</b>
	UFAC Class I / NFPA 260	Exceeds 30,000 Double Rubs (Wyzenbeek Method)	4858602
<b>COUNTRY</b>	<b>CLEANING CODES</b>		
India	S		

**ADDITIONAL PRODUCT NOTES**

Ca Tb 117-2013, Exclusive Pattern