

**PATTERN** Joy Lattice  
**COLOR** Raffia

**BRAND**

**Fabricut**

**APPLICATION**

**Fabric**

**USES**

**Bedding, Drapery**

**CATEGORIES**

**Crewels / Embroideries**

**BOOK**

**Surroundings (4 Books)  
Dune**

**COLORS**

**Linen**

**DESIGN TYPES**

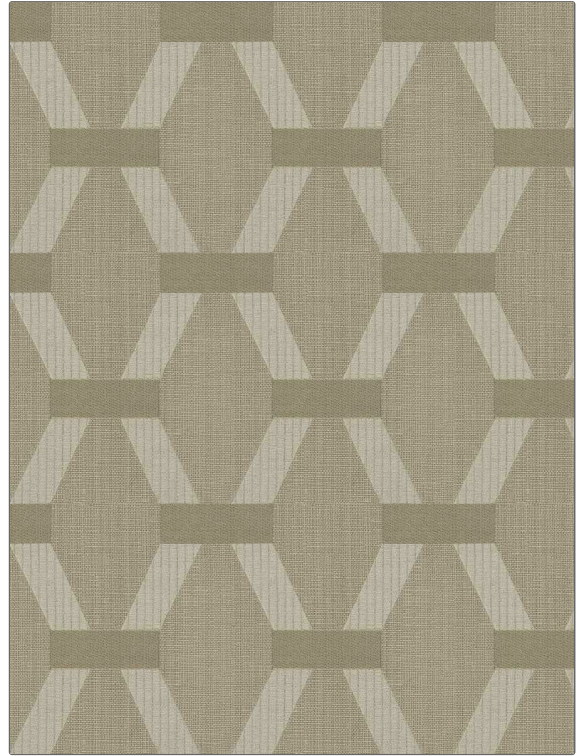
**Embroidery, Contemporary  
/ Modern, Diamond**

**SCALE**

**Medium**

**RAILROADED**

**Not Railroaded**



**WIDTH**

**51.00 in (129.54 cm)**

**VERTICAL REPEAT**

**6.25 in (15.88 cm)**

**HORIZONTAL REPEAT**

**10.37 in (26.34 cm)**

**CONTENT**

**Embroidery: 100% Viscose,  
Base: 66% Polyester, 34%  
Cotton**

**BACKING**

**PRODUCT NUMBER**

**4867101**

**DATE BOOKED**

**09/2021**

**COUNTRY**

**India**

**CLEANING CODES**

**S**

**ADDITIONAL PRODUCT NOTES**

**Embroidered Textiles Are Not, Guaranteed For Precise Color, Matching And Colorfastness., Color Placement Of Embroidery, May Vary. All Measurements, Quoted For Repeats Are, Approximate.**