

**PATTERN** Leadership  
**COLOR** 101

**BRAND**  
**Fabricut**

**APPLICATION**  
**Fabric**

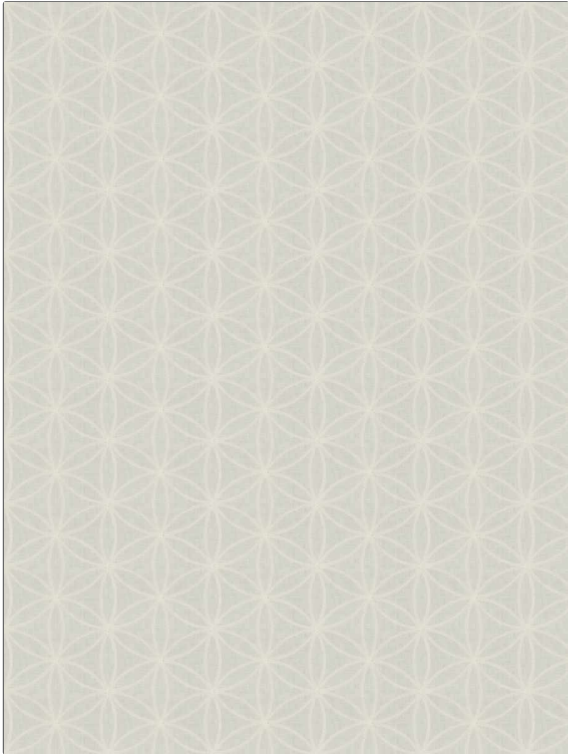
**USES**  
**Bedding, Drapery**

**CATEGORIES**  
**Crewels / Embroideries**

**COLORS**  
**White**

**DESIGN TYPES**  
**Embroidery, Contemporary / Modern, Dots / Circles**

**RAILROADED**  
**Not Railroaded**



WIDTH	VERTICAL REPEAT	HORIZONTAL REPEAT	CONTENT
51.00 in (129.54 cm)	3.00 in (7.62 cm)	5.00 in (12.70 cm)	Base:52% Polyester, 48% Cotton, Embr:100% Viscose
BACKING	PRODUCT NUMBER	COUNTRY	CLEANING CODES
	4867601	India	S

**ADDITIONAL PRODUCT NOTES**

**Embroidered Textiles Are Not, Guaranteed For Precise Color, Matching And Colorfastness., Color Placement Of Embroidery, May Vary. All Measurements, Quoted For Repeats Are, Approximate.**