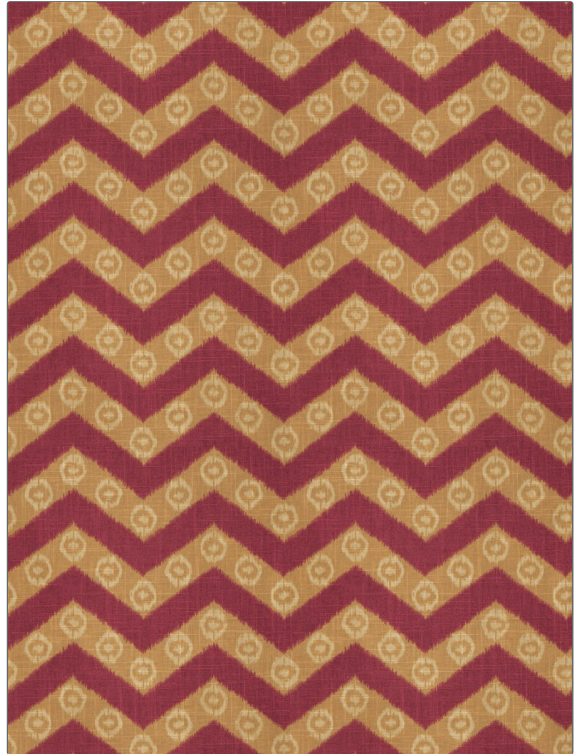


Fabric Product Details

PATTERN	Marl Chevron
COLOR	Mulberry
BRAND	APPLICATION
Fabricut	Fabric
USES	CATEGORIES
Bedding, Drapery, Multipurpose	Prints, Prints, Linen, Linen
BOOK	COLORS
Isabelle De Borchgrave Gallery	Burgundy
DESIGN TYPES	SCALE
Global / Ethnic, Print Pattern, Chevron	Medium
RAILROADED	
Not Railroaded	



WIDTH	VERTICAL REPEAT	HORIZONTAL REPEAT	CONTENT
54.00 in (137.16 cm)	15.00 in (38.10 cm)	13.50 in (34.29 cm)	55% Linen, 45% Cotton
FIRE CODES	DOUBLE RUBS	PRODUCT NUMBER	DATE BOOKED
UFAC Class I / NFPA 260	Exceeds 15,000 Double Rubs (Wyzenbeek Method)	4877001	02/2014
COUNTRY	CLEANING CODES		
China	S		

ADDITIONAL PRODUCT NOTES
Exclusive Pattern