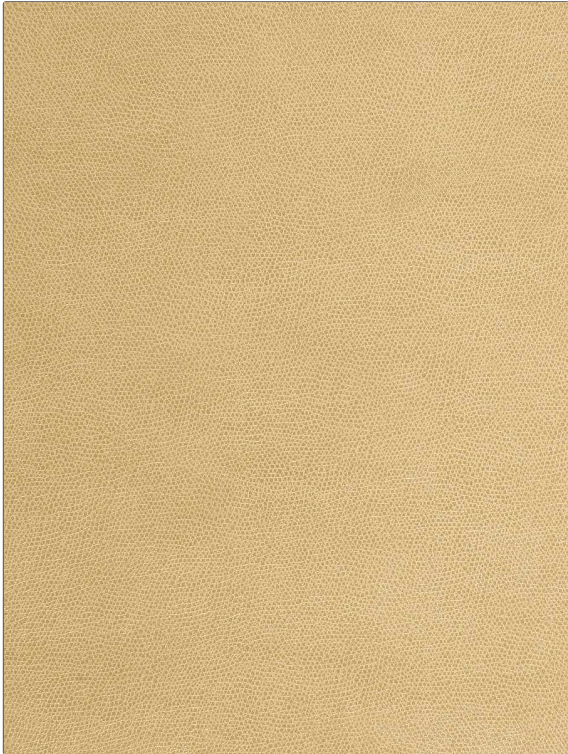


Fabric Product Details

PATTERN Bayside
COLOR Almond

BRAND	APPLICATION
Fabricut	Fabric
USES	CATEGORIES
Upholstery	Faux Leather / Vinyl
BOOK	COLORS
Studio Faux Leathers	Taupe / Tan
DESIGN TYPES	RAILROADED
Solid, Texture Plain, Contemporary / Modern, Animal Skins	Not Railroaded



WIDTH	FINISH	VERTICAL REPEAT	HORIZONTAL REPEAT
54.00 in (137.16 cm)	Sta*kleen Technology	0.00 in (0.00 cm)	0.00 in (0.00 cm)
CONTENT	FIRE CODES	DOUBLE RUBS	PRODUCT NUMBER
Face: 100% Polyurethane, Backing: 100% Polyester	UFAC Class I, Passes NFPA 260, Imo Ftpc Part 8 (Upholstery), Passes MVS 302	Exceeds 100,000 Double Rubs (Wyzenbeek Method)	5443106
DATE BOOKED	COUNTRY	CLEANING CODES	
12/2014	China	S	

ADDITIONAL PRODUCT NOTES

Sta*kleen Technology, Anti-Bacterial / Anti-Microbial