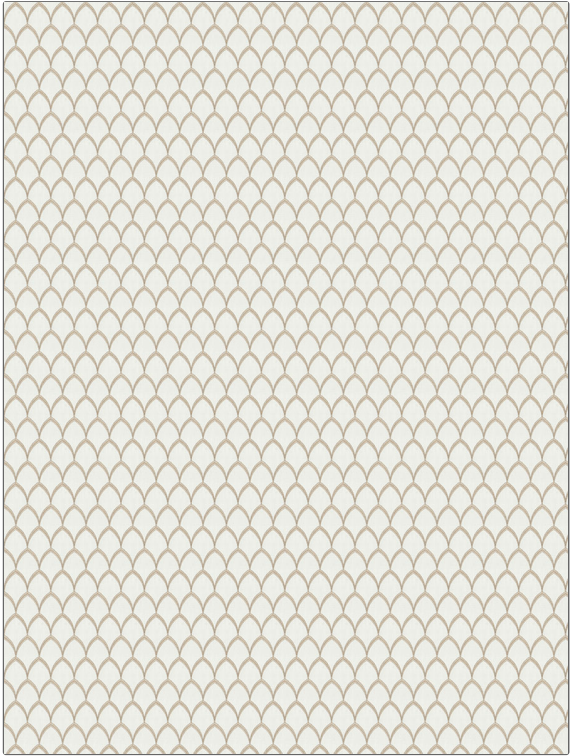


# Fabric Product Details

**PATTERN** Paratha  
**COLOR** Fawn

<b>BRAND</b>	<b>APPLICATION</b>
Fabricut	Fabric
<b>USES</b>	<b>CATEGORIES</b>
Bedding, Drapery	Crewels / Embroideries, Crewels / Embroideries
<b>COLORS</b>	<b>DESIGN TYPES</b>
Taupe / Tan, Off White / Ivory	Embroidery, Lattice / Fretwork, Contemporary / Modern
<b>SCALE</b>	<b>RAILROADED</b>
Medium	Not Railroaded



<b>WIDTH</b>	<b>VERTICAL REPEAT</b>	<b>HORIZONTAL REPEAT</b>	<b>CONTENT</b>
51.00 in (129.54 cm)	3.00 in (7.62 cm)	1.12 in (2.84 cm)	Embroidery: 100% Polyester, Base: 52% Polyester, 48% Cotton
<b>PRODUCT NUMBER</b>	<b>COUNTRY</b>	<b>CLEANING CODES</b>	
5470602	India	S	

**ADDITIONAL PRODUCT NOTES**

Exclusive Pattern, Embroidered Textiles Are Not, Guaranteed For Precise Color, Matching And Colorfastness., Color Placement Of Embroidery, May Vary. All Measurements, Quoted For Repeats Are, Approximate.