

**PATTERN** Oryza Ogee  
**COLOR** Delft

**BRAND**  
**Fabricut**

**APPLICATION**  
**Fabric**

**USES**  
**Bedding, Drapery**

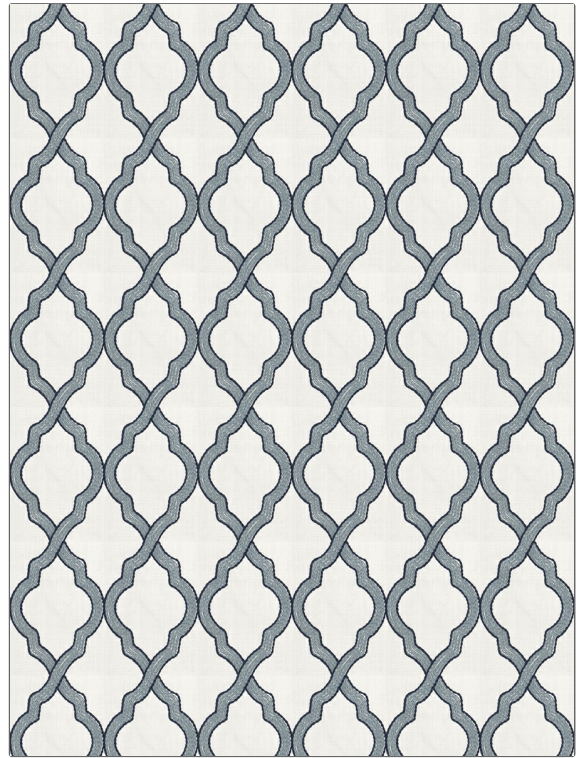
**CATEGORIES**  
**Crewels / Embroideries**

**COLORS**  
**Blue**

**DESIGN TYPES**  
**Embroidery, Scrollwork, Ogee**

**SCALE**  
**Medium**

**RAILROADED**  
**Not Railroaded**



WIDTH	VERTICAL REPEAT	HORIZONTAL REPEAT	CONTENT
51.00 in (129.54 cm)	6.00 in (15.24 cm)	4.50 in (11.43 cm)	<b>Embroidery: 100% Cotton, Base: 25% Viscose, 25% Polyester, 25% Linen, 25% Cotton</b>
BACKING	PRODUCT NUMBER	COUNTRY	CLEANING CODES
	5504802	India	S

**ADDITIONAL PRODUCT NOTES**

Exclusive Pattern, Embroidered Textiles Are Not, Guaranteed For Precise Color, Matching And Colorfastness., Color Placement Of Embroidery, May Vary. All Measurements, Quoted For Repeats Are, Approximate.