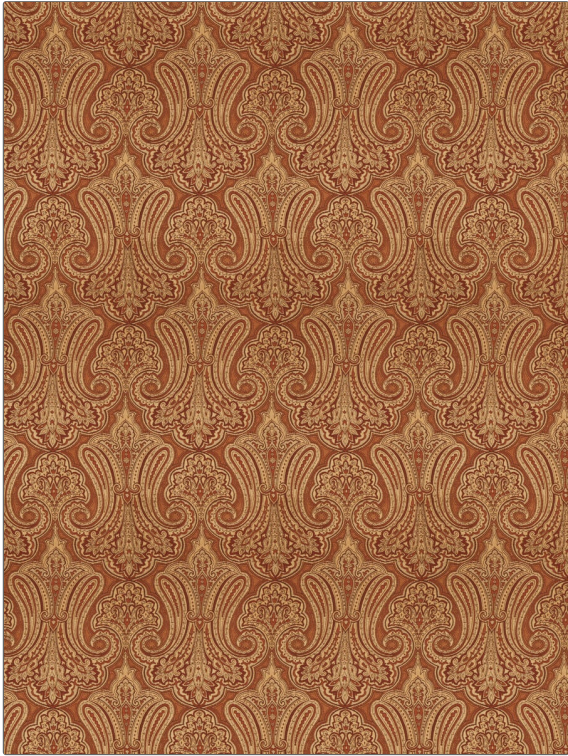


PATTERN Litchfield
COLOR Auburn

BRAND	APPLICATION
Fabricut	Fabric
USES	CATEGORIES
Upholstery	Wovens, Chenille
COLORS	DESIGN TYPES
Gold, Orange / Spice, Red	Jacquard Pattern, Paisley
SCALE	RAILROADED
Large	Not Railroaded



WIDTH	FINISH	VERTICAL REPEAT	HORIZONTAL REPEAT
54.00 in (137.16 cm)	Soil & Stain Repellent Finish	24.75 in (62.86 cm)	14.00 in (35.56 cm)
CONTENT	BACKING	FIRE CODES	DOUBLE RUBS
55% Rayon, 31% Polyester, 14% Acrylic		UFAC Class I / NFPA 260	Exceeds 15,000 Double Rubs (Wyzenbeek Method)
PRODUCT NUMBER	COUNTRY	CLEANING CODES	
5784201	USA	S	

ADDITIONAL PRODUCT NOTES

Soil & Stain Repellent Finish, Ca Tb 117-2013, Exclusive Pattern