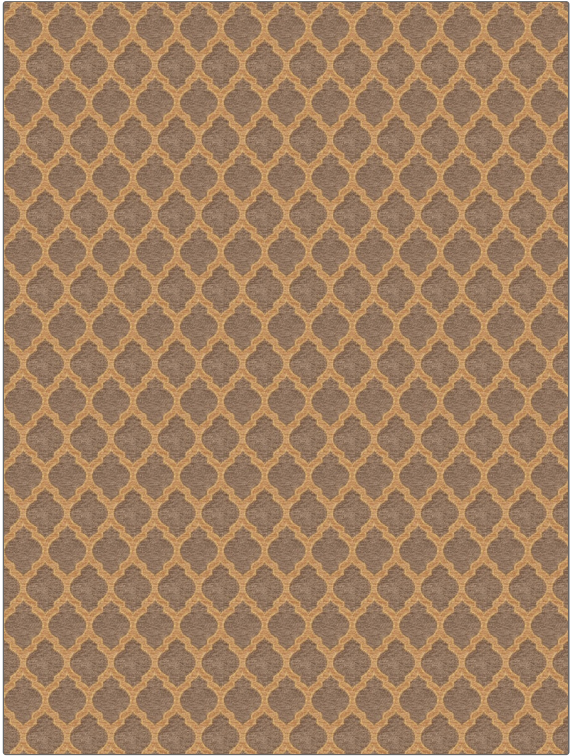


PATTERN Hartford
COLOR Cinder

BRAND	APPLICATION
Fabricut	Fabric
USES	CATEGORIES
Upholstery	Wovens, Chenille
COLORS	DESIGN TYPES
Taupe / Tan, Gold	Jacquard Pattern, Lattice / Fretwork, Ogee
SCALE	RAILROADED
Small	Not Railroaded



WIDTH	FINISH	VERTICAL REPEAT	HORIZONTAL REPEAT
57.00 in (144.78 cm)	Soil & Stain Repellent Finish	3.90 in (9.91 cm)	2.10 in (5.33 cm)
CONTENT	BACKING	FIRE CODES	DOUBLE RUBS
100% Polyester		UFAC Class I / NFPA 260	Exceeds 30,000 Double Rubs (Wyzenbeek Method)
PRODUCT NUMBER	COUNTRY	CLEANING CODES	
5786001	China	S	

ADDITIONAL PRODUCT NOTES

Soil & Stain Repellent Finish, Ca Tb 117-2013, Exclusive Pattern