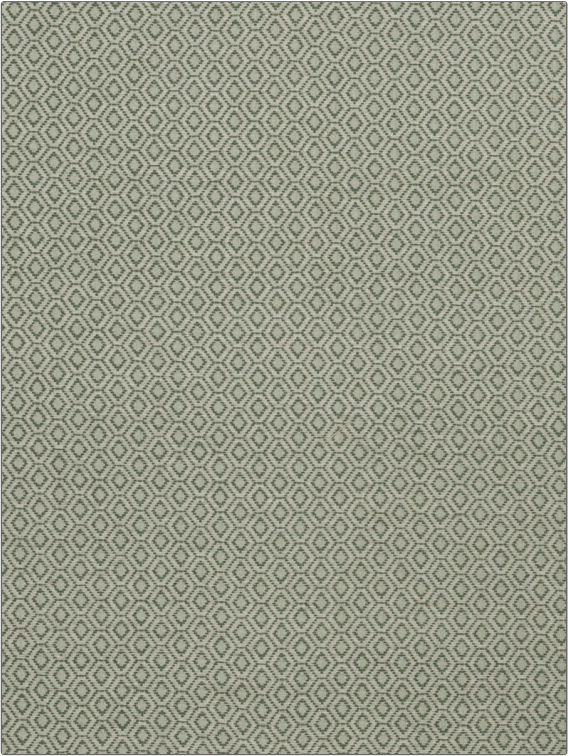


| | |
|---------|---------|
| PATTERN | Barnave |
| COLOR | 03 |

| | |
|---|------------------|
| BRAND | APPLICATION |
| Fabricut | Fabric |
| USES | CATEGORIES |
| Bedding, Drapery, Multipurpose, Upholstery | Wovens, Chenille |
| COLORS | DESIGN TYPES |
| Green | Diamond |
| SCALE | RAILROADED |
| Small | Not Railroaded |



| | | | |
|----------------------|-------------------------|---|----------------|
| WIDTH | VERTICAL REPEAT | HORIZONTAL REPEAT | CONTENT |
| 54.00 in (137.16 cm) | 0.75 in (1.90 cm) | 0.87 in (2.21 cm) | 100% Polyester |
| BACKING | FIRE CODES | DOUBLE RUBS | PRODUCT NUMBER |
| | UFAC Class I / NFPA 260 | Exceeds 51,000 Double Rubs (Wyzenbeek Method) | 5957503 |
| COUNTRY | CLEANING CODES | | |
| China | S | | |

| |
|-----------------------------------|
| ADDITIONAL PRODUCT NOTES |
| Ca Tb 117-2013, Exclusive Pattern |