

PATTERN **Quill Weave**
COLOR **Lichen**

BRAND

Liberty of London

APPLICATION

Fabric

USES

**Bedding, Drapery,
Multipurpose, Upholstery**

CATEGORIES

Wovens

BOOK

**LOL Modern Coll Art
Nouveau & tree Of Life**

COLORS

Green

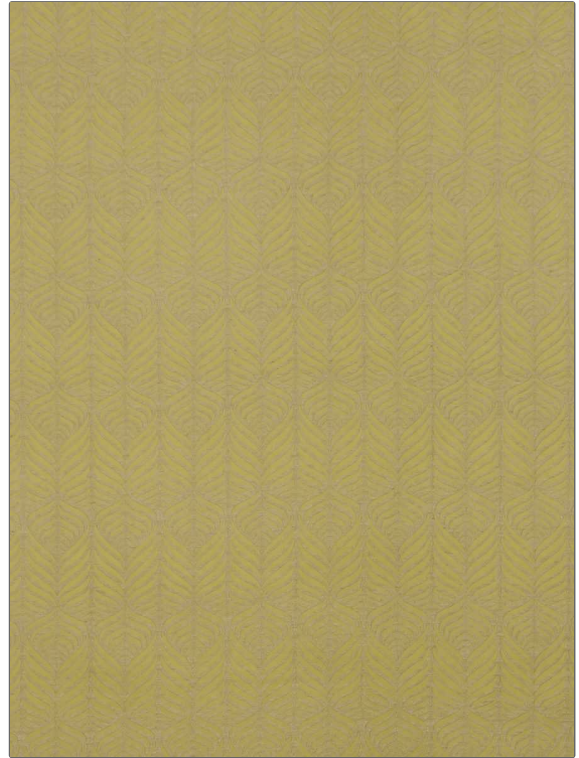
DESIGN TYPES

Leaves, Ogee

SCALE

Medium

RAILROADED

Not Railroaded

WIDTH

57.00 in (144.78 cm)

VERTICAL REPEAT

5.60 in (14.22 cm)

HORIZONTAL REPEAT

3.50 in (8.89 cm)

CONTENT

**46% Linen, 35% Polyester,
19% Cotton**

BACKING

FIRE CODES

UFAC Class I / NFPA 260

DOUBLE RUBS

**Exceeds 30,000 Double
Rubs (Wyzenbeek Method)**

PRODUCT NUMBER

5975903

DATE BOOKED

05/2021

COUNTRY

Italy

CLEANING CODES

S

ADDITIONAL PRODUCT NOTES

Passes 20,000 Martindale Tst, Ca Tb 117-2013, Exclusive Pattern