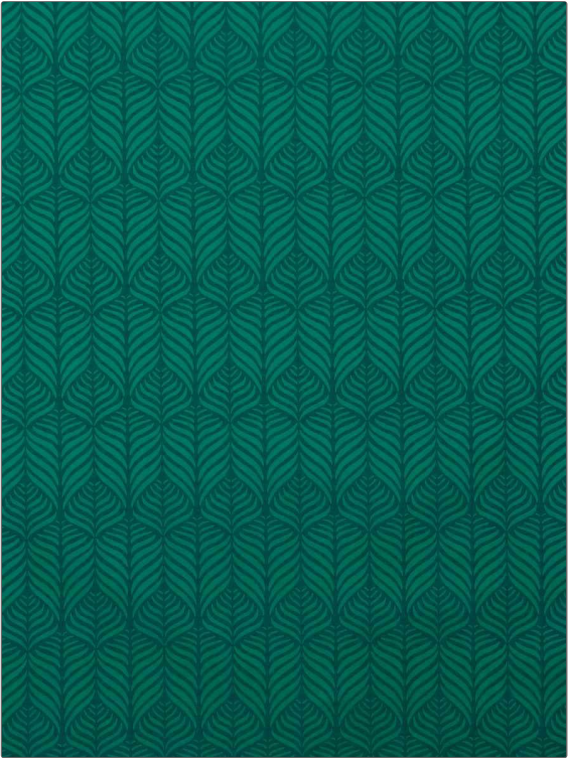


PATTERN	Quill Weave
COLOR	01

BRAND	APPLICATION
Liberty of London	Fabric
USES	CATEGORIES
Bedding, Drapery, Multipurpose, Upholstery	Wovens
COLORS	DESIGN TYPES
Green, Aqua / Teal	Leaves, Ogee
SCALE	RAILROADED
Medium	Not Railroaded



WIDTH	VERTICAL REPEAT	HORIZONTAL REPEAT	CONTENT
57.00 in (144.78 cm)	5.60 in (14.22 cm)	3.50 in (8.89 cm)	46% Linen, 35% Polyester, 19% Cotton
BACKING	FIRE CODES	DOUBLE RUBS	PRODUCT NUMBER
	UFAC Class I / NFPA 260	Exceeds 30,000 Double Rubs (Wyzenbeek Method)	5976601
COUNTRY	CLEANING CODES		
Italy	S		

ADDITIONAL PRODUCT NOTES
Passes 20,000 Martindale Tst, Ca Tb 117-2013, Exclusive Pattern