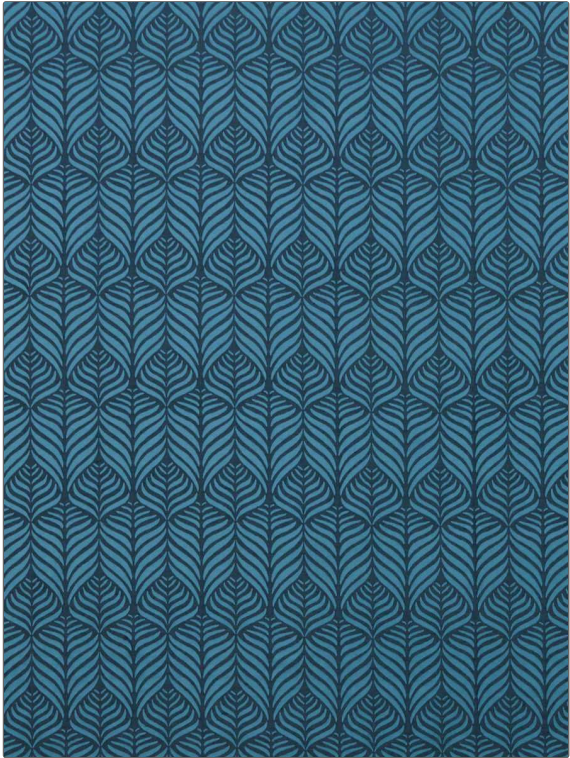


**PATTERN** Quill Weave  
**COLOR** 02

<b>BRAND</b>	<b>APPLICATION</b>
Liberty of London	Fabric
<b>USES</b>	<b>CATEGORIES</b>
Bedding, Drapery, Multipurpose, Upholstery	Wovens
<b>COLORS</b>	<b>DESIGN TYPES</b>
Blue	Leaves, Ogee
<b>SCALE</b>	<b>RAILROADED</b>
Medium	Not Railroaded



<b>WIDTH</b>	<b>VERTICAL REPEAT</b>	<b>HORIZONTAL REPEAT</b>	<b>CONTENT</b>
57.00 in (144.78 cm)	5.60 in (14.22 cm)	3.50 in (8.89 cm)	46% Linen, 35% Polyester, 19% Cotton
<b>BACKING</b>	<b>FIRE CODES</b>	<b>DOUBLE RUBS</b>	<b>PRODUCT NUMBER</b>
	UFAC Class I / NFPA 260	Exceeds 30,000 Double Rubs (Wyzenbeek Method)	5976602
<b>COUNTRY</b>	<b>CLEANING CODES</b>		
Italy	S		

**ADDITIONAL PRODUCT NOTES**

Passes 20,000 Martindale Tst, Ca Tb 117-2013, Exclusive Pattern